



**SRI PUMPS & FITTINGS
INDUSTRIAL CORPORATION**



PRODUCTS :

Dairy Valves ■

Pipe Fittings ■

Centrifugal Pumps ■

*Pneumatically
Controlled Valves* ■

SRI PUMPS & FITTINGS Industrial Corporation

Profile

SRI PUMPS & FITTINGS INDUSTRIAL CORPORATION, is located at Morumpudi Junction, on NH-5 in Rajahmundry , the Town which is on the Banks of Holy River Godavari, established under Partnership of Mr. Rajesh Jain & Mr. Kirti Kothari under SSI Unit in the year 2000 to manufacture SS Fittings, Valves, Unions etc. and SS Centrifugal Milk Pumps.

Sri Pumps & Fittings offers broadest range of Stainless Steel Centrifugal Pumps, Sanitary Valves & Fittings suitable for Aseptic and hygienic process equipments conforming to SMS, DIN & IDF Standards.

FACILITIES & EQUIPMENTS The Factory is in a built up area of 1466 Sq. mtrs. and site area of 2,600 Sq. mtrs. The Company is well equipped with High-Tech manufacturing facilities like Investment Casting Foundry with Metal Testing Lab, CNC Machining Centre and Hydraulic Test Equipments to achieve superior quality product from starting to end product.

SPF manufacturing range includes, Bends, Unions, Clamps, Tees, Plug/Butterfly Valves, Non-Return Valves/Flow Regulating Valves Micro Valves, Tubular type Strainers, Disc Filters, Flow Diversion Valves/Angular Valves, Spray Balls, Pneumatic on/off Valves, Ball Valves and High Pressure Pipe Fittings applicable in Milk Dairies, Braveries, Food Processing & Pharmaceutical Industries.

Quality in Product Development

Engineering and Design supported by Computer System, developed in compliance with detailed plans to verify the development stage of each new product in real time.

Careful analysis of information, experiences acquired on the market and customers demands, in order to generate new products able to meet the market trends.

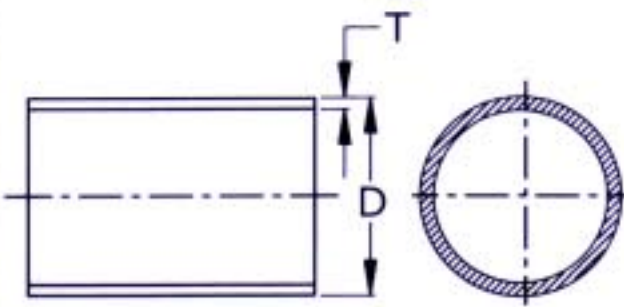
Execution of meticulous tests during the setting up of product.

Preplanned checks and tests in every processing stage to grant the compliance of all technical/qualitative features of each product.



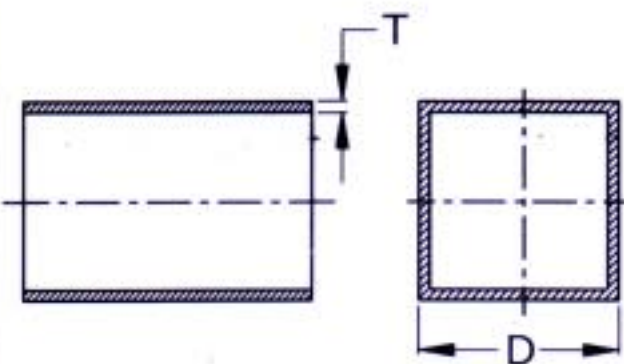
SRI PUMPS & FITTINGS INDUSTRIAL CORPORATION

ROUND PIPE



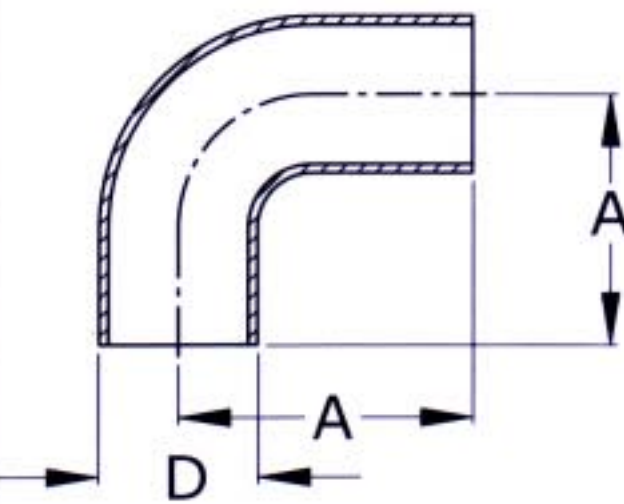
Diameter (D)		T(14G)	T(16G)
Inches	MM	(W.T)	(W.T)
1"	25.4	2.0	1.6
1 1/2"	38.1	2.0	1.6
2"	50.8	2.0	1.6
2 1/2"	63.5	2.0	1.6
3"	76.2	2.0	1.6
4"	101.6	2.0	1.6

SQUARE PIPE



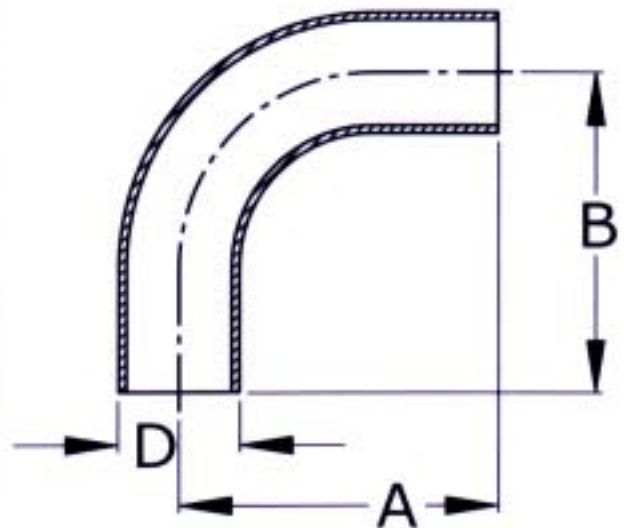
(D) MM	T(18G) (W.T.)	T(16G) (W.T.)	T(14G) (W.T.)	T(12G) (W.T.)	T(11G) (W.T.)	T(10G) (W.T.)
20 X 20	1.2	1.6	2.0	2.6	2.9	3.2
25X25	1.2	1.6	2.0	2.6	2.9	3.2
30X30	1.2	1.6	2.0	2.6	2.9	3.2
40X40	1.2	1.6	2.0	2.6	2.9	3.2
50X50	1.2	1.6	2.0	2.6	2.9	3.2
60X60	1.2	1.6	2.0	2.6	2.9	3.2
80X80	1.2	1.6	2.0	2.6	2.9	3.2
100X100	1.2	1.6	2.0	2.6	2.9	3.2

SHORT BEND



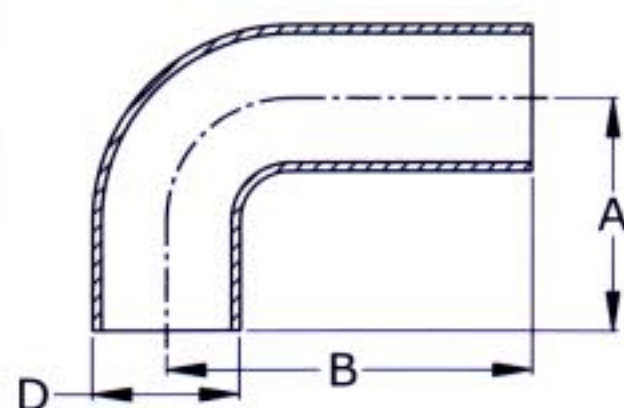
Diameter (D)		B	A
Inches	MM	(W.T)	
1"	25.4	1.6	55
1 1/2"	38.1	1.6	70
2"	50.8	1.6	82
2 1/2"	63.5	1.6	105
3"	76.2	2.0	110
4"	101.6	2.0	150

LONG BEND



Diameter (D)		B	A
Inches	MM	(W.T)	
1"	25.4	1.6	80
1 1/2"	38.1	1.6	105
2"	50.8	1.6	130
2 1/2"	63.5	1.6	160
3"	76.2	2.0	190
4"	101.6	2.0	200

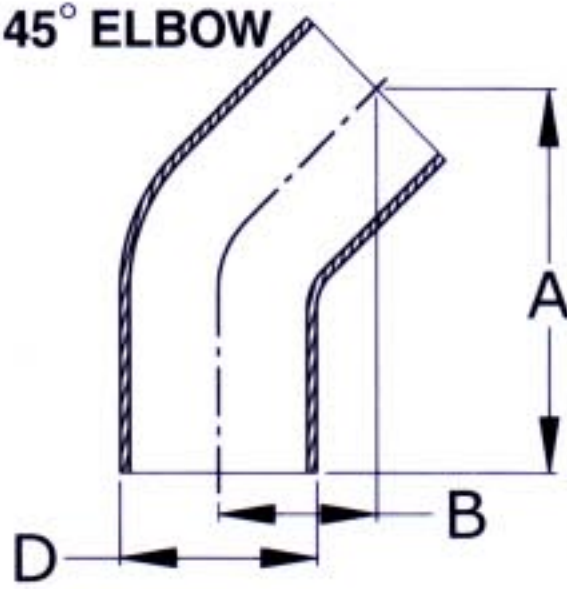
EXTENDED BEND



Diameter (D)		B	A	B
Inches	MM	(W.T)		
1"	25.4	1.6	55	258
1 1/2"	38.1	1.6	70	270
2"	50.8	1.6	82	282
2 1/2"	63.5	1.6	105	205
3"	76.2	2.0	110	310
4"	101.6	2.0	150	350

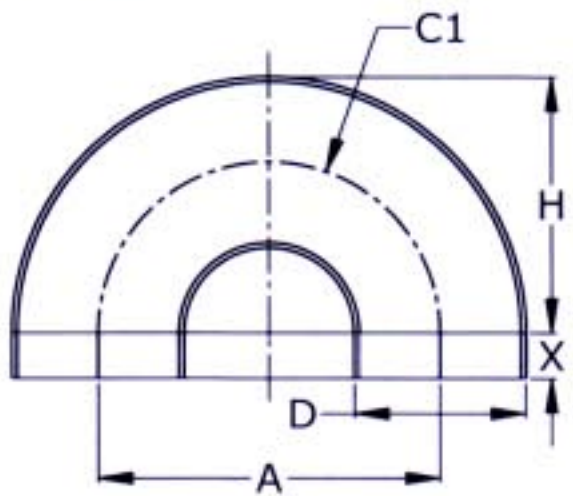
SRI PUMPS & FITTINGS INDUSTRIAL CORPORATION

45° ELBOW



Diameter (D)		C	A	B
Inches	MM	(W.T)		
1"	25.4	1.6	61	25
1 1/2"	38.1	1.6	74	30
2"	50.8	1.6	101	42
2 1/2"	63.5	1.6	113.5	47
3"	76.2	2.0	130	53.5
4"	101.6	2.0	190.5	76

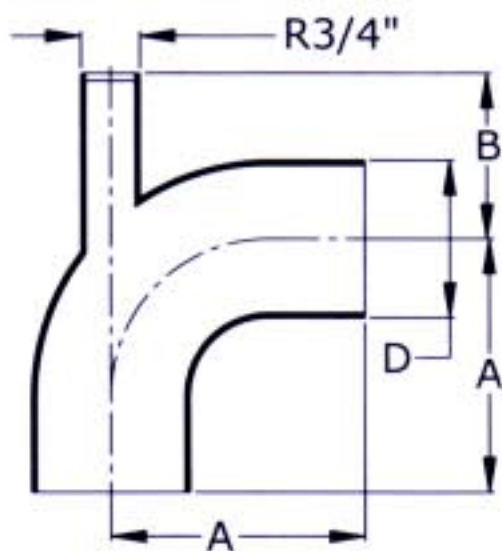
U - BEND



X= As per customer Requirement

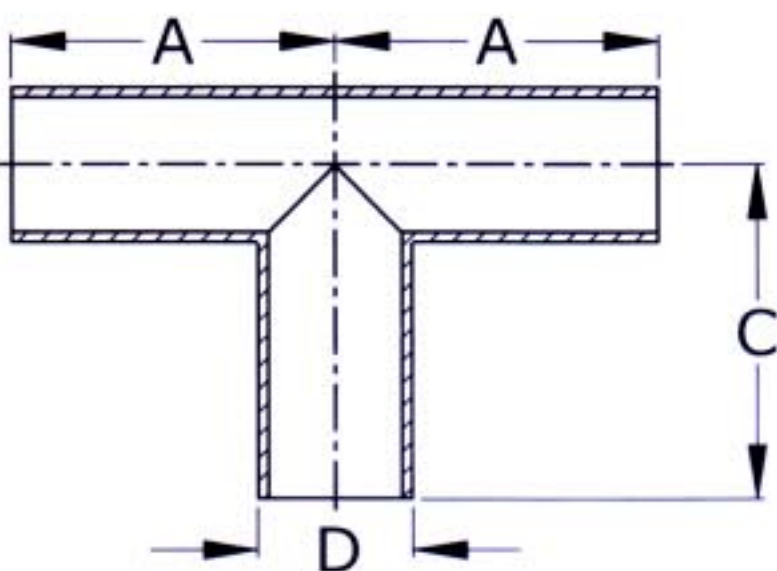
Diameter (D)		A	H	C ₁
Inches	MM			
1"	25.4	79.5	52.5	R39.75
1 1/2"	38.1	87.0	62.5	R43.5
2"	50.8	117	83.9	R58.5
2 1/2"	63.5	131.5	97.5	R65.75
3"	76.2	152.5	114.2	R76.25
4"	101.6	190.5	146.0	R95.25

INSTRUMENT BEND



Diameter (D)		C	A	B
Inches	MM	(W.T)		
1 1/2"	38.1	1.6	70	65
2"	50.8	1.6	82	67
2 1/2"	63.5	1.6	105	70
3"	76.2	2.0	110	70
4"	101.6	2.0	186	50

Tee SMS, (IDF/ISO), DIN



Tee (IDF/ISO)

Diameter (D)		B	A	C
Inches	MM	(W.T)		
1"	25.4	1.6	55	55
1 1/2"	38.1	1.6	70	70
2"	50.8	1.6	82	82
2 1/2"	63.5	1.6	105	105
3"	76.2	2.0	110	110
4"	101.6	2.0	150	150

Tee (SMS)

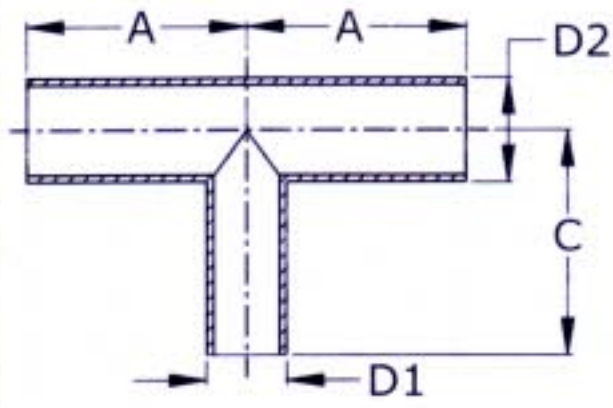
Diameter (D)		B	A	C
Inches	MM	(W.T)		
1"	25.4	1.6	55	55
1 1/2"	38.1	1.6	70	70
2"	50.8	1.6	82	82
2 1/2"	63.5	1.6	105	105
3"	76.2	2.0	110	110
4"	101.6	2.0	150	150

Tee (DIN)

Diameter (D)		B	A	C
Nomi.	D MM	(W.T)		
25	28	1.0	50	50
40	40	1.0	67	67
50	52	1.0	72	72
65	70	1.0	85	85
80	85	2.0	98	98
104	104	2.0	115	115

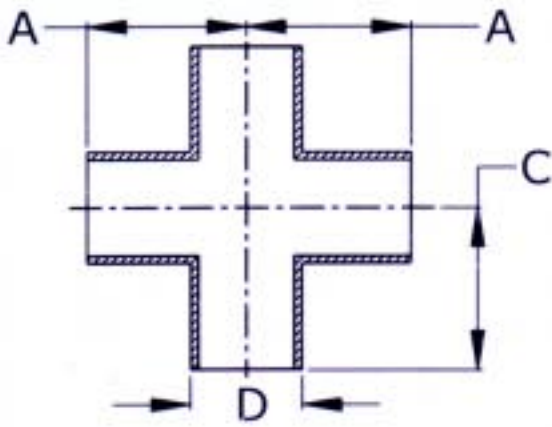
SRI PUMPS & FITTINGS INDUSTRIAL CORPORATION

REDUCED TEE



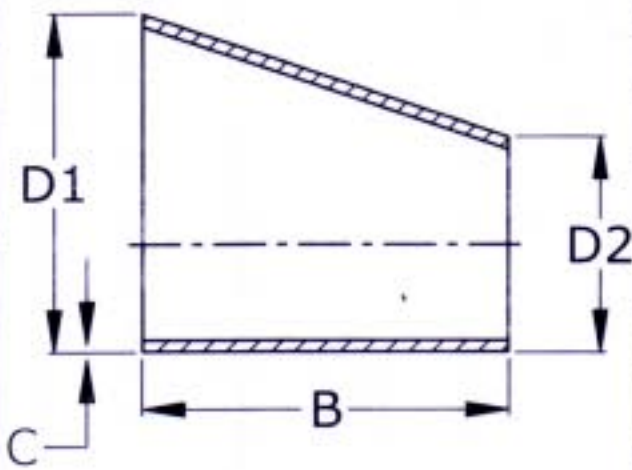
Dia.(D2)	Dia.(D1)	A	B	C
Inches				
1"	1/2", 3/4",	55	1.6	55
1 1/2"	1/2", 3/4", 1"	70	1.6	70
2"	3/4", 1", 1 1/2"	80	1.5	80
2 1/2"	3/4", 1", 1 1/2"	100	1.6	100
3"	1", 1 1/2", 2"	110	2.0	110
4"	1 1/2", 2", 2 1/2", 3"	150	2.0	150

CROSS



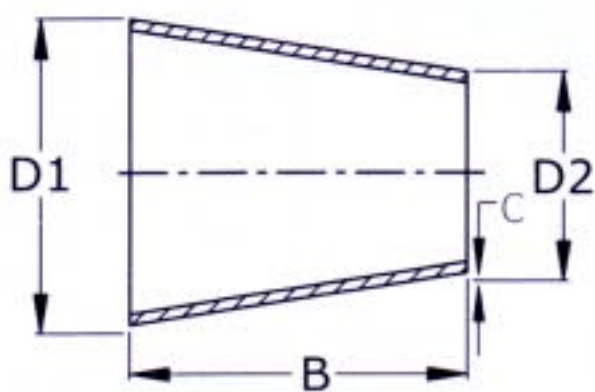
Diameter (D2)		A	B	C
Inches	MM			
1"	25.4	55	1.6	55
1 1/2"	38.1	70	1.6	70
2"	50.8	82	1.5	82
2 1/2"	63.5	105	1.6	105
3"	76.2	110	2.0	110
4"	101.6	150	2.0	150

ECCENTRIC REDUCER



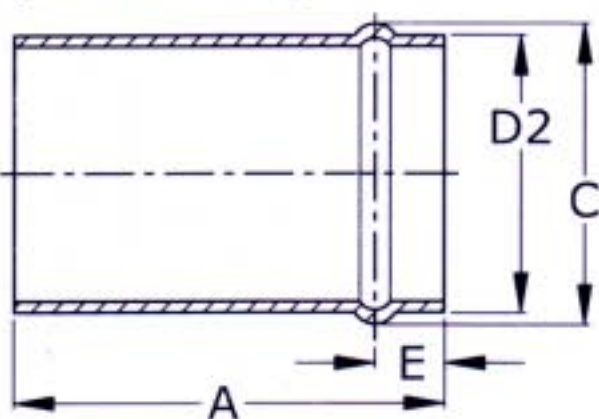
Diameter (D1)		Diameter (D2)		C	B
Inches	MM	Inches	MM	(W.T)	
1 1/2"	38.1	1"	25.4	2.0	44
2"	50.8	1"	25.4	2.0	85
2"	50.8	1 1/2"	38.1	2.0	42
2 1/2"	63.5	1 1/2"	38.1	2.0	82
2 1/2"	63.5	2"	50.8	2.0	40
3"	76.2	2"	50.8	2.0	78
3"	76.2	2 1/2"	63.5	2.0	39
4"	101.6	2 1/2"	63.5	2.0	61
4"	101.6	3"	76.2	2.0	61

CONCENTRIC REDUCER



Diameter (D1)		Diameter (D2)		C	B
Inches	MM	Inches	MM	(W.T)	
1 1/2"	38.1	1"	25.4	2.0	44
2"	50.8	1"	25.4	2.0	56
2"	50.8	1 1/2"	38.1	2.0	42
2 1/2"	63.5	1 1/2"	38.1	2.0	82
2 1/2"	63.5	2"	50.8	2.0	40
3"	76.2	2"	50.8	2.0	78
3"	76.2	2 1/2"	63.5	2.0	39
4"	101.6	2 1/2"	63.5	2.0	81
4"	101.6	3"	76.2	2.0	81

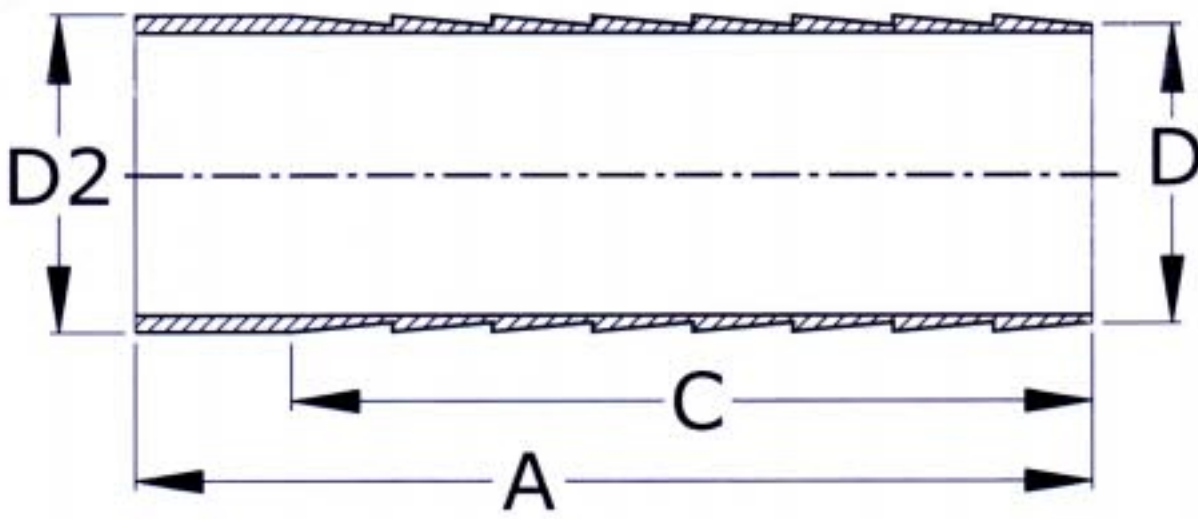
HOSE CONNECTION (STRAIGHT)



Diameter (D2)		A	C	E
Inches	MM			
1"	25.4	53	29	10
1 1/2"	38.1	51	42	10
2"	50.8	61	55	10
2 1/2"	63.5	80	67	10
3"	76.2	100	80	10
4"	101.6	130	106	10

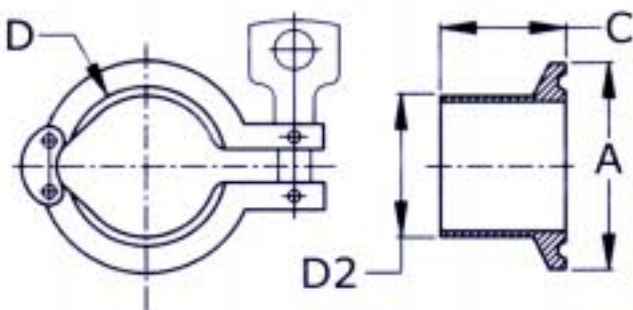
SRI PUMPS & FITTINGS INDUSTRIAL CORPORATION

HOSE NIPPLE



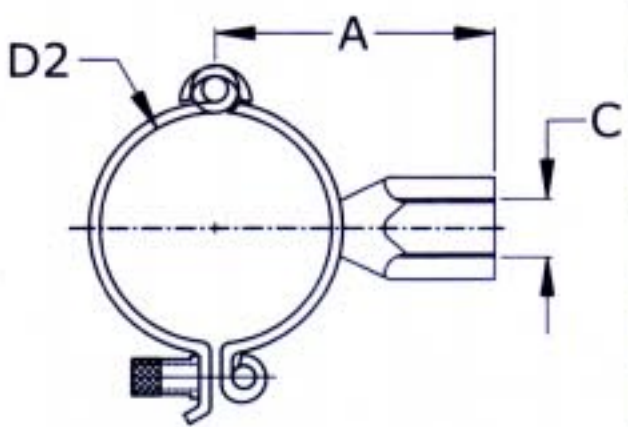
Diameter (D2)		A	C	D
Inches	MM			
1"	25.4	300	128	22
1 1/2"	38.1	300	128	35
2"	50.8	300	128	48
2 1/2"	63.5	300	128	60

CLAMP WITH FERRULES



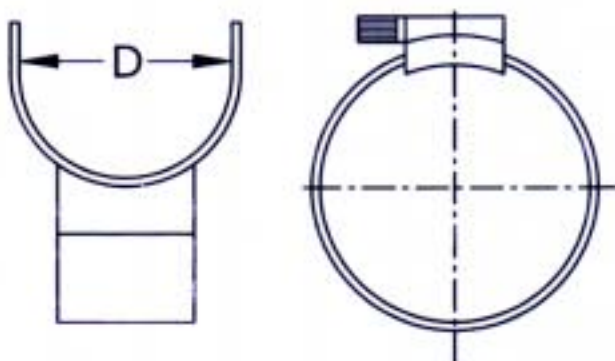
Diameter (D2)		A	C	D
Inches	MM			
1"	25.4	51	28.5	53
1 1/2"	38.1	51	28.5	53
2"	50.8	64	28.5	66
2 1/2"	63.5	90	28.5	92
3"	76.2	90	28.5	92
4"	101.6	126	35	128

PIPE CLAMP



Diameter (D2)		A	C
Inches	MM		THREADING
			(B.S.P)
1"	25.4	51	1/2"
1 1/2"	38.1	57	1/2"
2"	50.8	63.5	1/2"
2 1/2"	63.5	70	1/2"
3"	76.2	76	1/2"
4"	101.6	89	1/2"

PIPE SUPPORT WITH STRAP

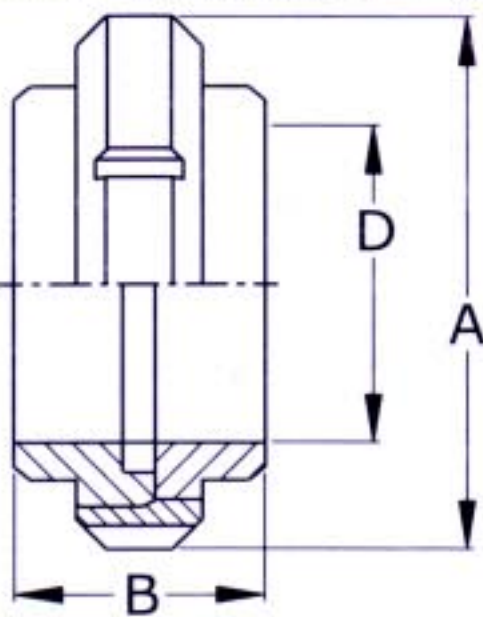


Diameter (D)	
Inches	MM
1"	25.4
1 1/2"	38.1
2"	50.8
2 1/2"	63.5
3"	76.2
4"	101.6

SRI PUMPS & FITTINGS INDUSTRIAL CORPORATION

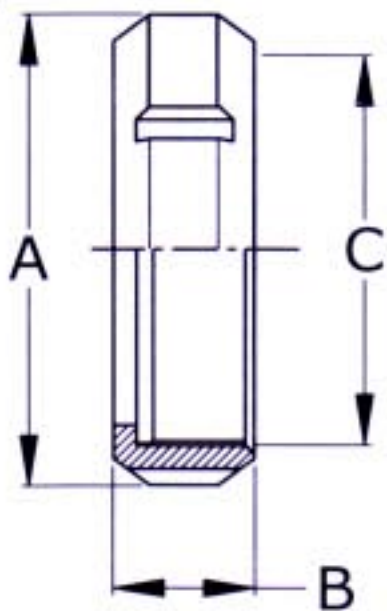
UNION (EXPANDABLE)

(SMS STANDARD)



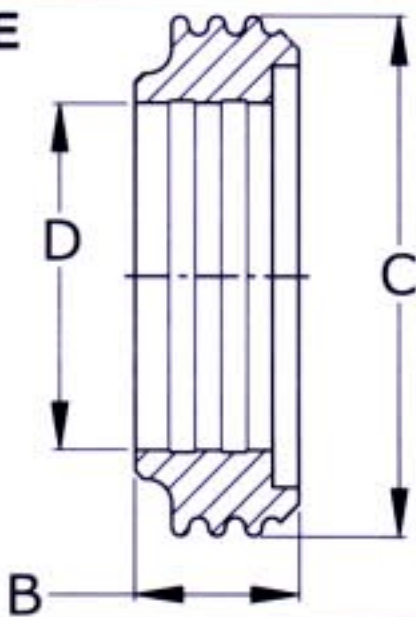
Diameter (D)			
Inches	MM	A	B
1"	25.4	51	38
1 1/2"	38.1	74	44
2"	50.8	84	46
2 1/2"	63.5	100	56
3"	76.2	114	66

NUT



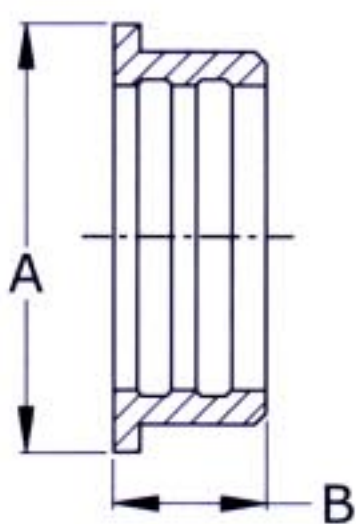
Nominal Size				Round Threading
Inches	MM	A	B	C
1"	25.4	51	38	RD40-6 TPI
1 1/2"	38.1	74	44	RD60-6 TPI
2"	50.8	84	46	RD70-6 TPI
2 1/2"	63.5	100	56	RD85-6 TPI
3"	76.2	114	66	RD98-6 TPI
4"	101.6	154	45	RD127-6 TPI

MALE



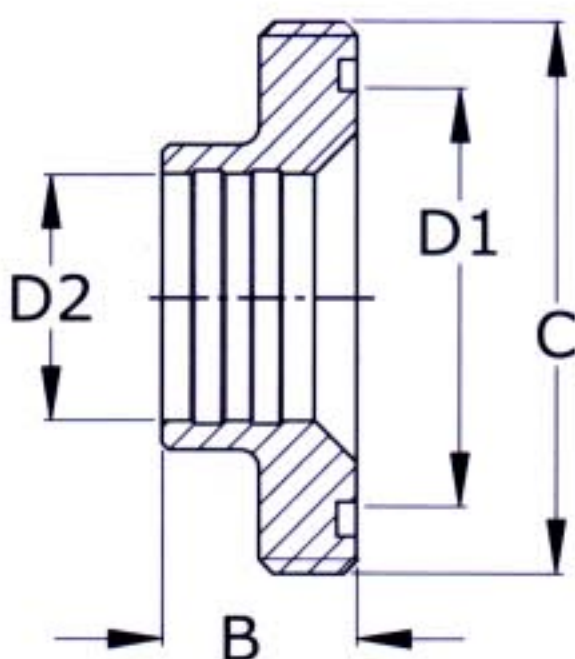
Diameter (D)			Round Threading
Inches	MM	B	C
1"	25.4	20	RD40-6 TPI
1 1/2"	38.1	23	RD60-6 TPI
2"	50.8	25	RD70-6 TPI
2 1/2"	63.5	30	RD85-6 TPI
3"	76.2	35	RD98-6 TPI

LINER



Diameter (D)			
Inches	MM	A	B
1"	25.4	35.5	17
1 1/2"	38.1	55	20
2"	50.8	65	20
2 1/2"	63.5	80	25
3"	76.2	93	30

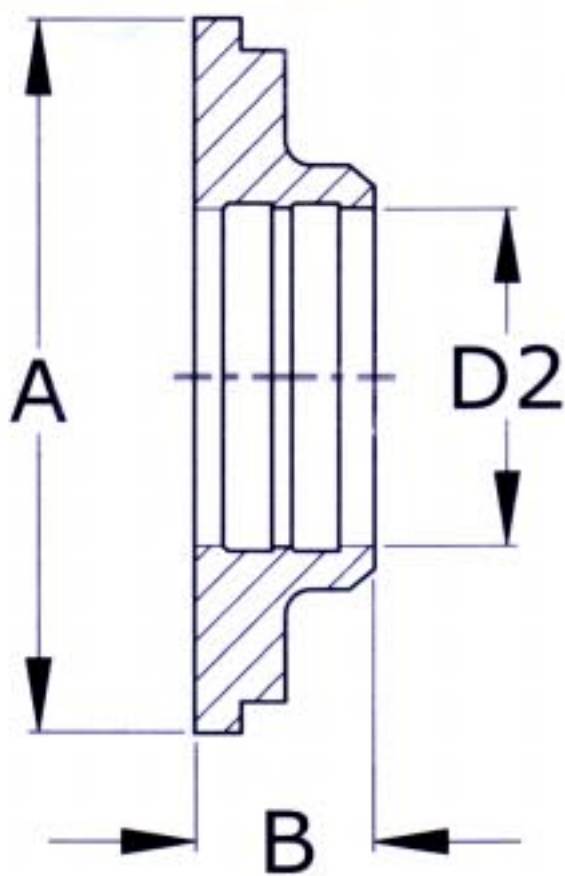
REDUCING MALE



Diameter (D1)		Diameter (D2)			Round Threading
Inches	MM	Inches	MM	B	C
1 1/2"	38.1	1"	25.4	23	RD 60 - 6 TPI
2"	50.8	1"	25.4	25	RD 70 - 6 TPI
2"	50.8	1 1/2"	38.1	25	RD 70 - 6 TPI
2 1/2"	63.5	1"	25.4	30	RD 85 - 6 TPI
2 1/2"	63.5	1 1/2"	38.1	30	RD 85 - 6 TPI
2 1/2"	63.5	2"	50.8	30	RD 85 - 6 TPI
3"	76.2	1"	25.4	35	RD 98 - 6 TPI
3"	76.2	1 1/2"	38.1	35	RD 98 - 6 TPI
3"	76.2	2"	50.8	35	RD 98 - 6 TPI
3"	76.2	2 1/2"	63.5	35	RD 98 - 6 TPI

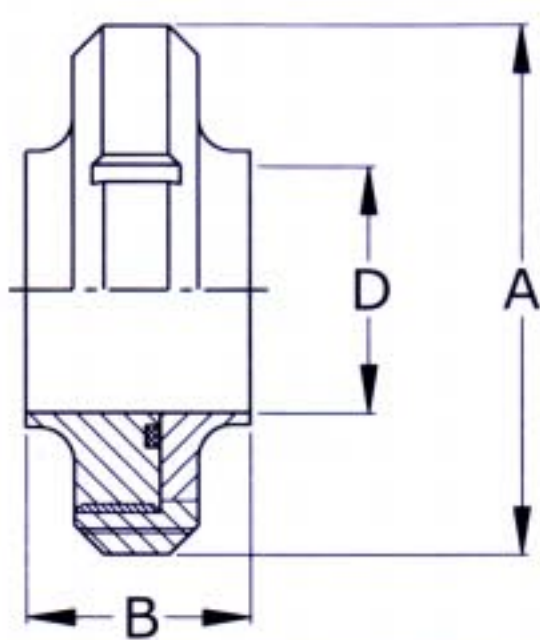
SRI PUMPS & FITTINGS INDUSTRIAL CORPORATION

REDUCING LINER



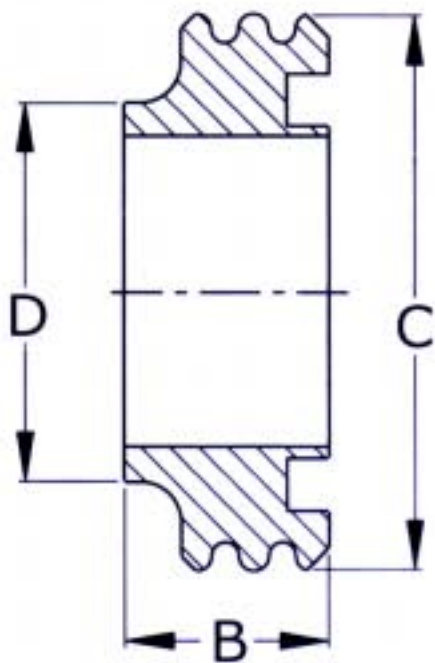
Nominal Size		Diameter (D2)			
Inches	MM	Inches	MM	A	B
1 1/2"	38.1	1"	25.4	55	17
2"	50.8	1"	25.4	65	17
2"	50.8	1 1/2"	38.1	65	20
2 1/2"	63.5	1"	25.4	80	17
2 1/2"	63.5	1 1/2"	38.1	80	20
2 1/2"	63.5	2"	50.8	80	20
3"	76.2	1 1/2"	38.1	93	20
3"	76.2	2"	50.8	93	20
3"	76.2	2 1/2"	63.5	93	25

WELDABLE UNION



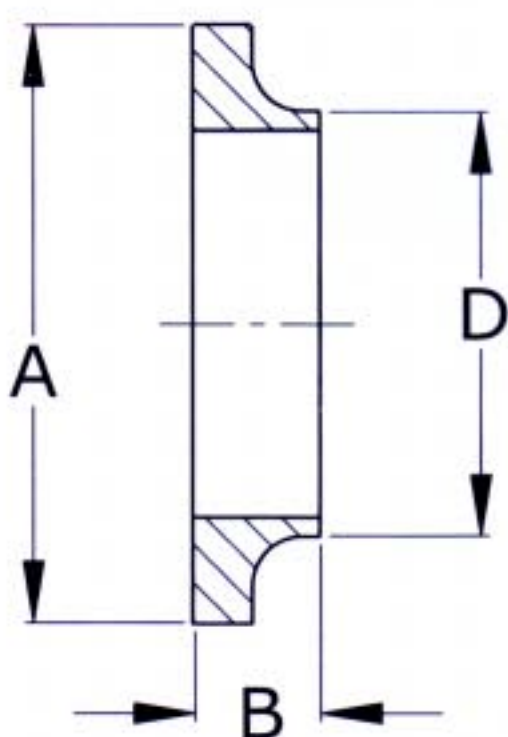
Diameter (D)		A	B
Inches	MM		
1"	25.4	51	24
1 1/2"	38.1	74	30
2"	50.8	24	30
2 1/2"	63.5	100	34
3"	76.2	114	35
4"	101.6	154	48

WELDABLE MALE



Diameter (D)		B	Threading
Inches	MM		C
1"	25.4	15	RD 40 - 6 TPI
1 1/2"	38.1	20	RD 60 - 6 TPI
2"	50.8	20	RD 70 - 6 TPI
2 1/2"	63.5	24	RD 85 - 6 TPI
3"	76.2	24	RD 98 - 6 TPI
4"	101.6	25	RD 132 - 6 TPI

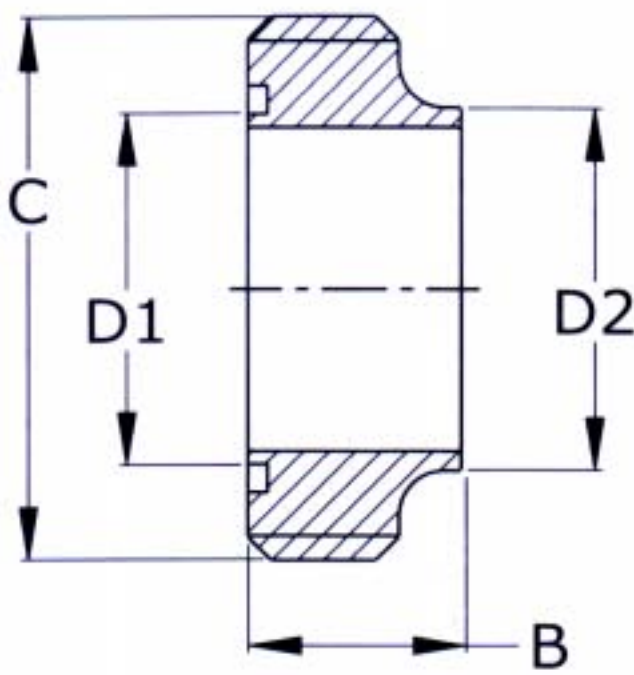
WELDABLE LINER



Diameter (D)		A	B
Inches	MM		
1"	25.4	35	8
1 1/2"	38.1	55	9
2"	50.8	65	9
2 1/2"	63.5	80	9
3"	76.2	93	10
4"	101.6	127	12

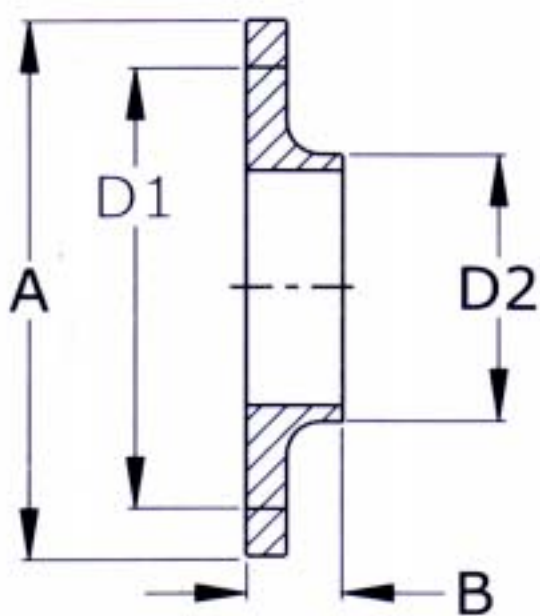
SRI PUMPS & FITTINGS INDUSTRIAL CORPORATION

REDUCING MALE



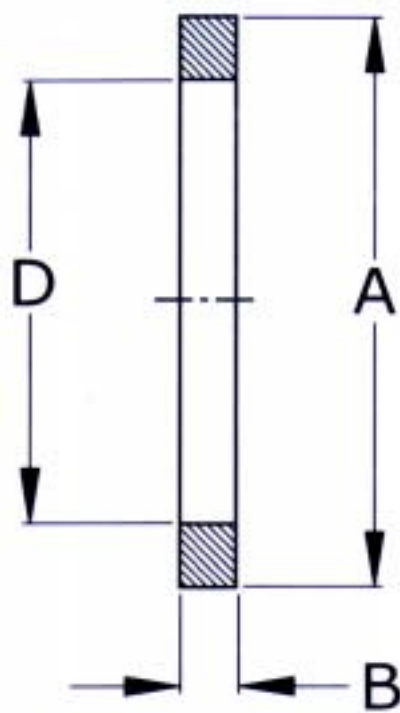
Diameter (D1)		Diameter (D2)		Threading	
Inches	MM	Inches	MM	B	C
1 1/2"	38.1	1"	25.4	20	RD 60 - 6 TPI
2"	50.8	1"	25.4	20	RD 70 - 6 TPI
2"	50.8	1 1/2"	38.1	20	RD 70 - 6 TPI
2 1/2"	63.5	1 1/2"	38.1	24	RD 85 - 6 TPI
2 1/2"	63.5	2"	50.8	24	RD 85 - 6 TPI
3"	76.2	2"	50.8	24	RD 98 - 6 TPI
3"	76.2	2 1/2"	63.5	24	RD 98 - 6 TPI
4"	101.6	2 1/2"	63.5	35	RD 132 - 6 TPI
4"	101.6	3"	76.2	35	RD 132 - 6 TPI

REDUCING LINER



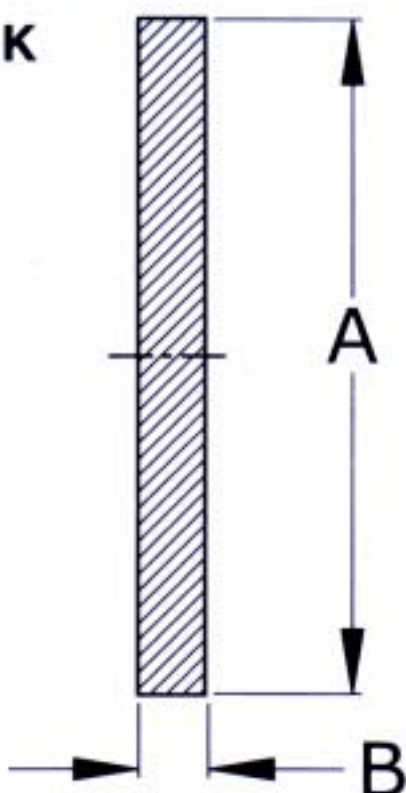
Nominal Size		Diameter (D2)		A	B
Inches	MM	Inches	MM		
1 1/2"	38.1	1"	25.4	55	9
2"	50.8	1"	25.4	65	9
2"	50.8	1 1/2"	38.1	65	9
2 1/2"	63.5	1 1/2"	38.1	80	9
2 1/2"	63.5	2"	50.8	80	9
3"	76.2	2"	50.8	93	10
3"	76.2	2 1/2"	63.5	93	10
4"	101.6	2 1/2"	63.5	127	15
4"	101.6	3"	76.2	127	15

SEAL RING



Diameter (D)		A	B
Inches	MM		
1"	25.4	32	6
1 1/2"	38.1	48	6
2"	50.8	61	6
2 1/2"	63.5	73.5	6
3"	76.2	86	6
4"	101.6	113.5	6

BLANK

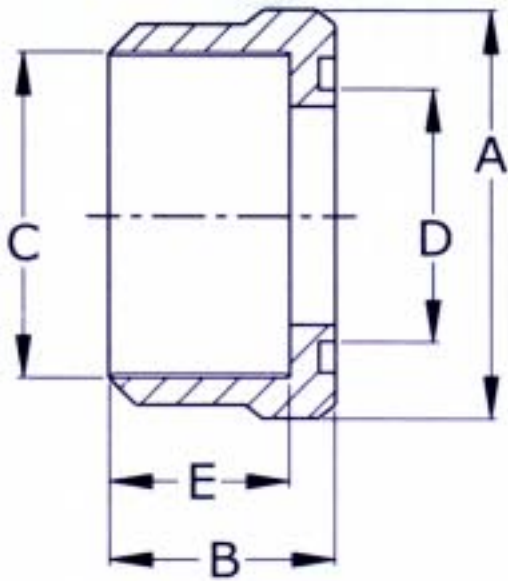


Nominal Size		A	B
Inches	MM		
1"	25.4	35	3
1 1/2"	38.1	55	4
2"	50.8	65	4
2 1/2"	63.5	80	4
3"	76.2	93	5
4"	101.6	127	5

SRI PUMPS & FITTINGS INDUSTRIAL CORPORATION

ADAPTOR

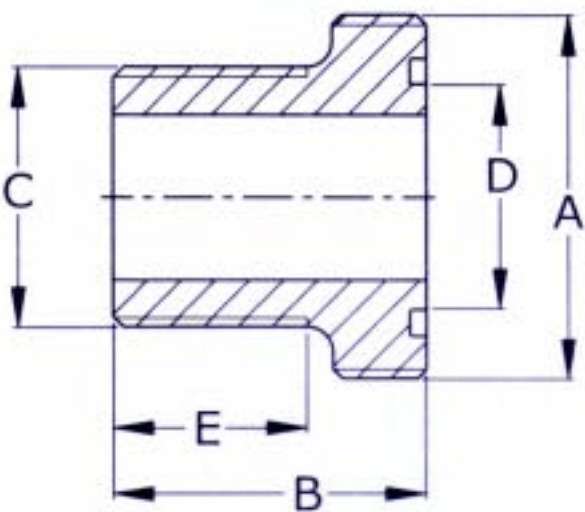
(SMS MALE TO BSP FEMALE)



Diameter (D)					
Inches	MM	B	E	Threading	Threading
				A	C
1"	25.4	23	14	RD 40 - 6 TPI	R 1"
1 1/2"	38.1	32	16	RD 60 - 6 TPI	R 1 1/2"
2"	50.8	38	19	RD 70 - 6 TPI	R 2"
2 1/2"	63.5	42	21	RD 85 - 6 TPI	R 2 1/2"
3"	76.2	45	24	RD 98 - 6 TPI	R 3"

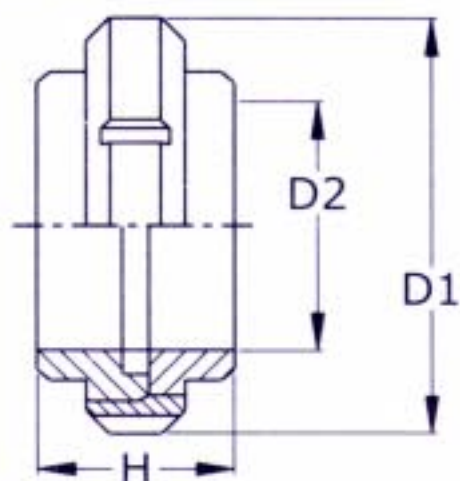
ADAPTOR

(SMS MALE TO BSP MALE)



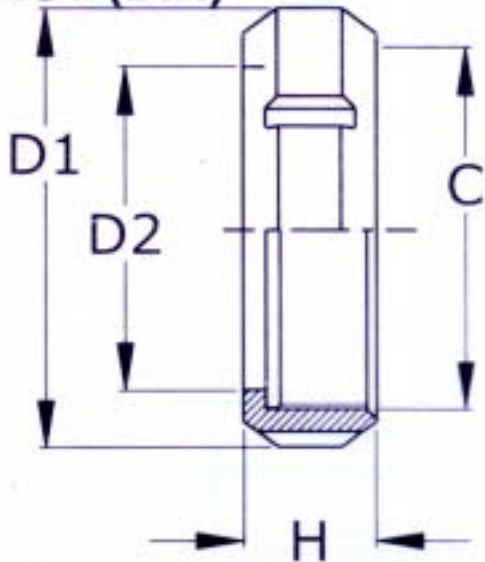
Diameter (D)					
Inches	MM	B	E	Threading	Threading
				A	C
1"	25.4	30	14	RD 40 - 6 TPI	R 1"
1 1/2"	38.1	42	16	RD 60 - 6 TPI	R 1 1/2"
2"	50.8	47	19	RD 70 - 6 TPI	R 2"
2 1/2"	63.5	55	21	RD 85 - 6 TPI	R 2 1/2"
3"	76.2	58	24	RD 98 - 6 TPI	R 3"

(DIN STANDARD) UNION (EXPANDABLE)



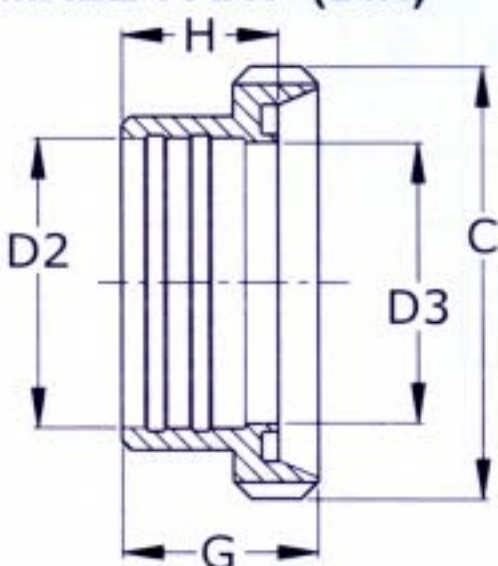
D1	D2		
MM	MM	NW	H
63	28.2	25	44
70	34.2	32	50
78	40.2	40	53
92	52.2	50	57
112	70.3	65	65
127	85.3	80	74

NUT (DIN)



D1	D2	NW	H	C
MM	MM			Threading
63	36	25	21	RD 52 - 6 TPI
70	42	32	21	RD 58 - 6 TPI
78	49	40	21	RD 65 - 6 TPI
92	62	50	22	RD 78 - 6 TPI
112	80	65	25	RD 95 - 6 TPI
127	94	80	30	RD 110 - 6 TPI

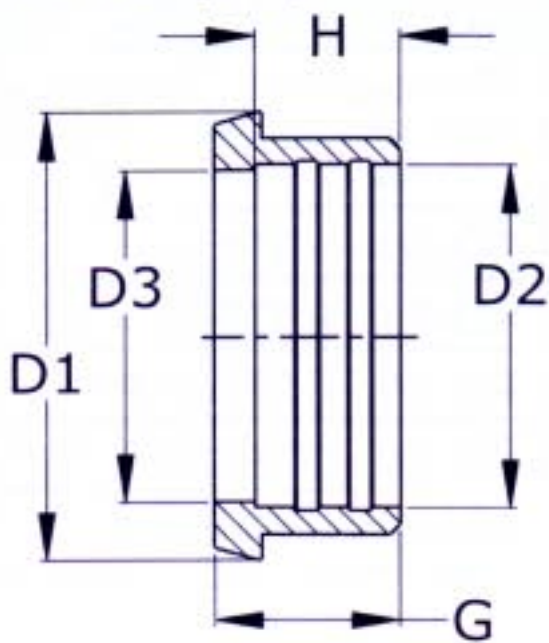
MALE PART (DIN)



Dia (D2)	Dia (D3)			Threading	
MM	MM	NW	G	C	H
28.2	26.5	25	29	RD 52 - 6 TPI	15
34.2	32.5	32	32	RD 58 - 6 TPI	18
40.2	38.5	40	33	RD 65 - 6 TPI	20
52.2	50.5	50	35	RD 78 - 6 TPI	22
70.3	66.5	65	40	RD 95 - 6 TPI	25
85.3	81.5	80	45	RD 110 - 6 TPI	28

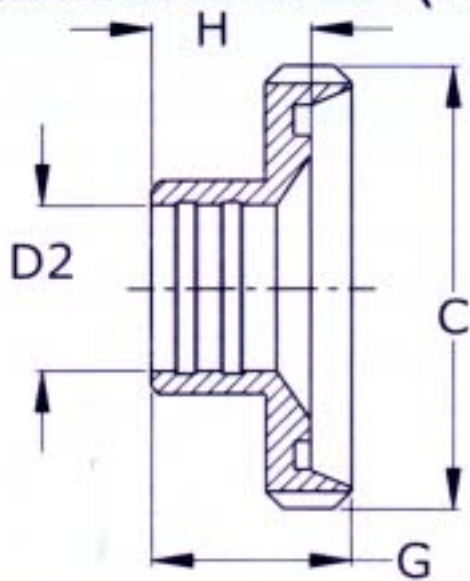
SRI PUMPS & FITTINGS INDUSTRIAL CORPORATION

LINER (DIN)



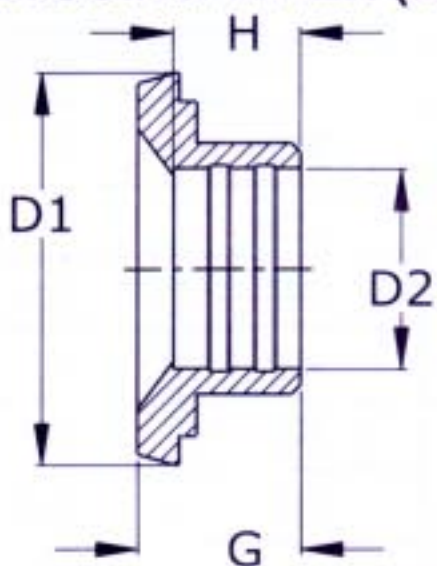
MM	MM	MM	NW	G	H
Dia (D1)	Dia (D2)	Dia (D3)			
44	28.2	26.5	25	22	15
50	34.2	32.5	32	25	18
56	40.2	38.5	40	26	20
68	52.2	50.5	50	28	22
86	70.3	66.5	65	32	25
100	85.3	81.5	80	37	28

REDUCING MALE (DIN)



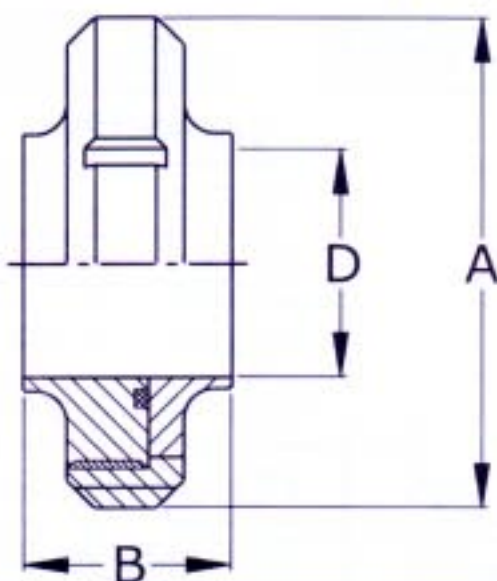
Dia (D2)			Threading	
MM	NW	G	C	H
28.2	32X25	25	RD 58 - 6 TPI	15
34.2	40X32	26	RD 65 - 6 TPI	18
40.2	50X40	28	RD 78 - 6 TPI	20
52.2	65X50	32	RD 95 - 6 TPI	22
70.3	80X65	37	RD 110 - 6 TPI	25

REDUCING LINER (DIN)



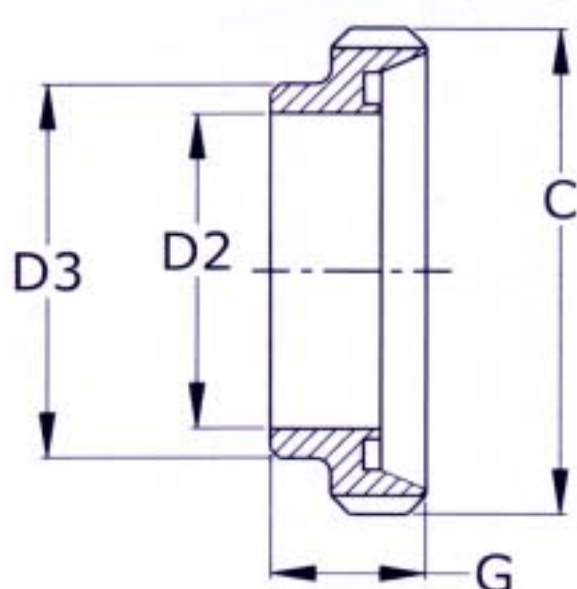
Dia (D1)	Dia (D2)			
MM	MM	NW	G	H
50	28.2	32X25	25	15
56	34.2	40X32	26	18
68	40.2	50X40	28	20
86	52.2	65X50	32	22
100	70.3	80X65	37	25

WELDABLE UNION (DIN)



Dia (D1)	Dia (D2)		
MM	MM	NW	G
63	26	25	44
70	32	32	48
78	38	40	53
92	50	50	57
112	66	65	65
127	81	80	75
142	110	100	30

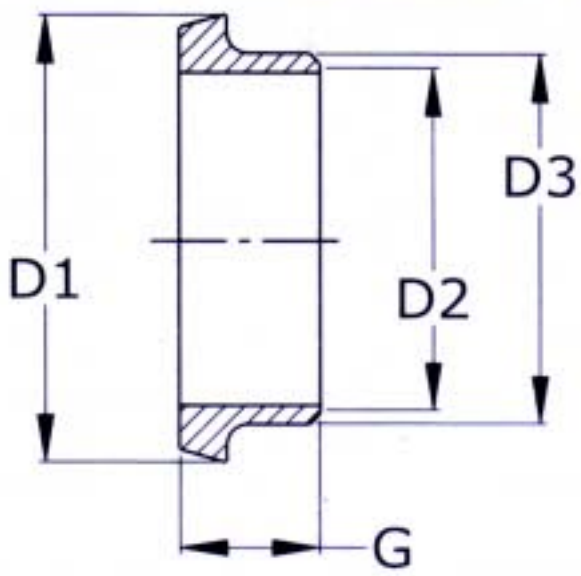
WELDABLE MALE (DIN)



Dia (D2)	Dia (D3)			Threading
MM	MM	NW	G	C
26	28	25	22	RD 52 - 6 TPI
32	34	32	22	RD 58 - 6 TPI
38	40	40	22	RD 65 - 6 TPI
50	52	50	23	RD 78 - 6 TPI
66	70	65	25	RD 95 - 6 TPI
81	85	80	28	RD 110 - 6 TPI
98	113	100	32	RD 127 - 6 TPI

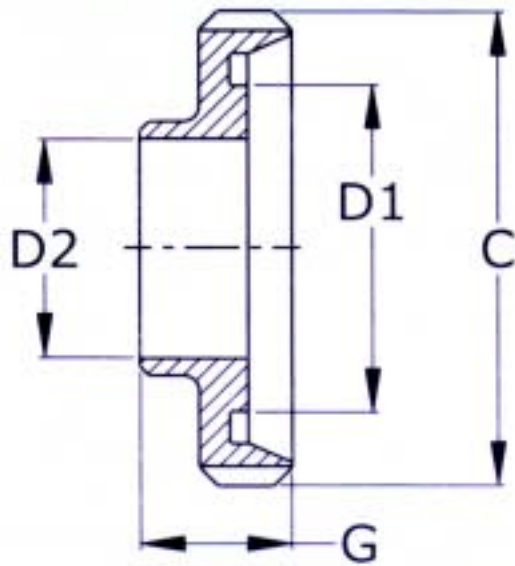
SRI PUMPS & FITTINGS INDUSTRIAL CORPORATION

WELDABLE LINER (DIN)



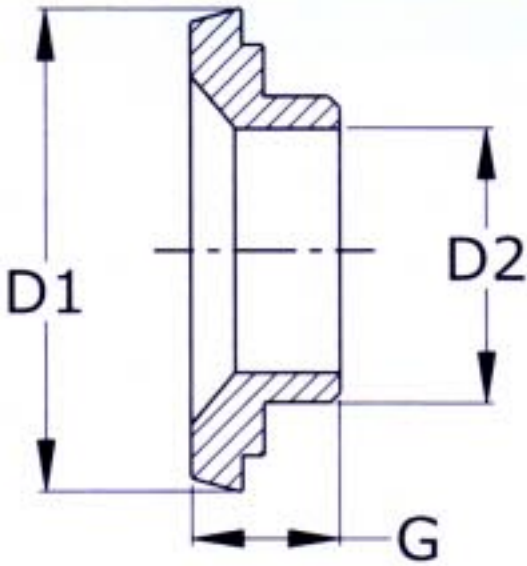
Dia (D1)	Dia (D2)	Dia (D3)		
MM	MM	MM	NW	G
44	26	28	25	15
50	32	34	32	15
56	38	40	40	15
68	50	52	50	16
86	66	70	65	17
100	81	85	80	20
116	98	103	100	25

REDUCING MALE (DIN)



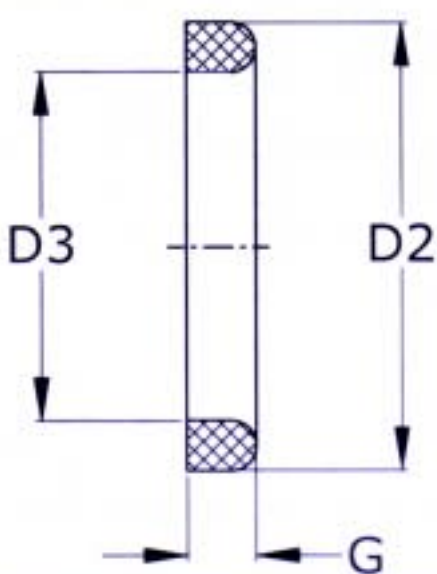
Dia (D1)	Dia (D2)			
MM	MM	NW	G	C
38	26	25X32	32	RD 58 - 6 TPI
50	38	40X32	35	RD 65 - 6 TPI
66	50	50X40	40	RD 78 - 6 TPI
81	66	65X50	44	RD 95 - 6 TPI
100	81	80X65	50	RD 110 - 6 TPI

REDUCING LINER (DIN)



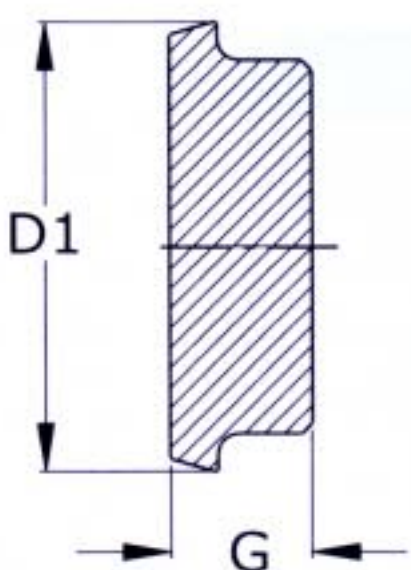
Dia (D1)	Dia (D2)		
MM	MM	NW	G
38	26	25X32	25
50	38	40X32	26
66	50	50X40	27
81	66	65X50	36
100	81	80X65	40

SEAL RING



Dia (D2)	Dia (D3)		
MM	MM	NW	G
40	30	25	5
46	36	32	5
52	42	40	5
64	54	50	5
81	71	65	5
95	85	80	5

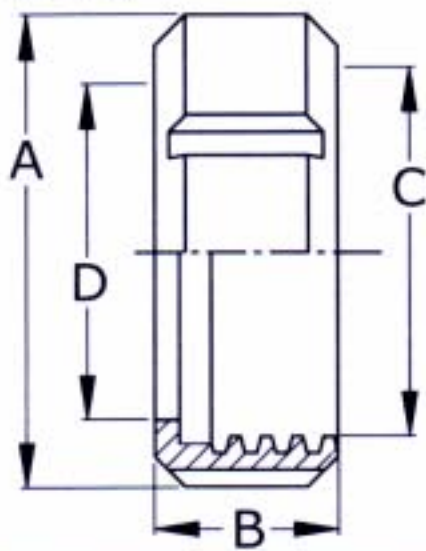
BLANK



Dia (D1)		
MM	NW	G
44	25	15
50	32	15
56	40	15
68	50	16
86	65	18
100	80	18

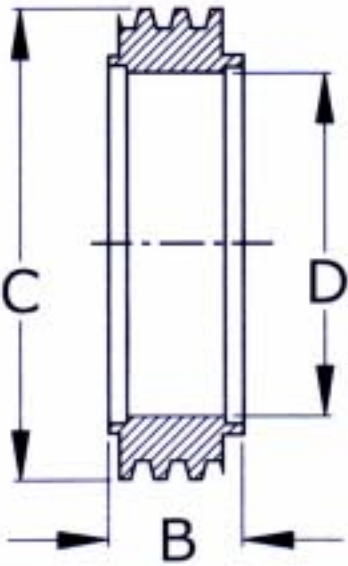
SRI PUMPS & FITTINGS INDUSTRIAL CORPORATION

NUT (IDF)



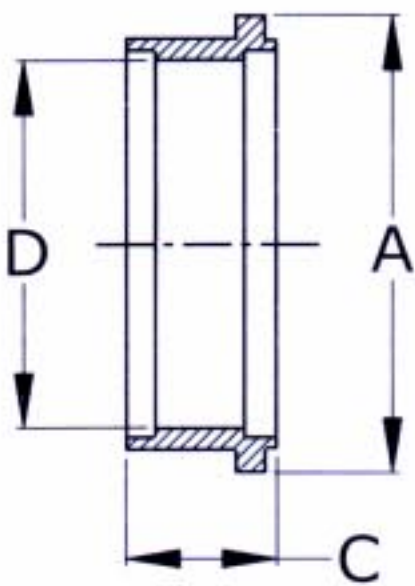
Dia (D)		ACME Threading	
MM	A	C	B
25.4	48	25.5	30
38.1	64	38	30
50.8	77	51	30
63.5	91	63.5	30
76.2	106	76	30

EXPANDABLE MALE (IDF)



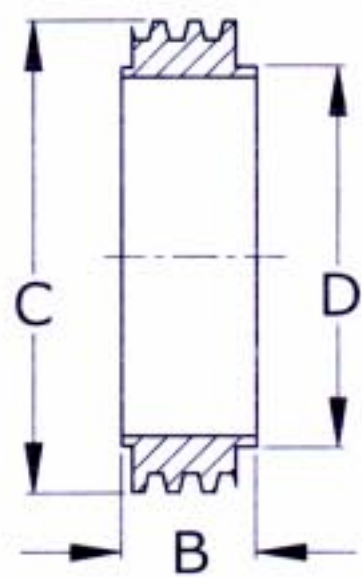
Dia (D)	ACME Threading	
MM	C	B
25.4	25.5	17
38.1	38	19.5
50.8	51	19.5
63.5	63.5	25
76.2	76	30

EXPANDABLE LINER (IDF)



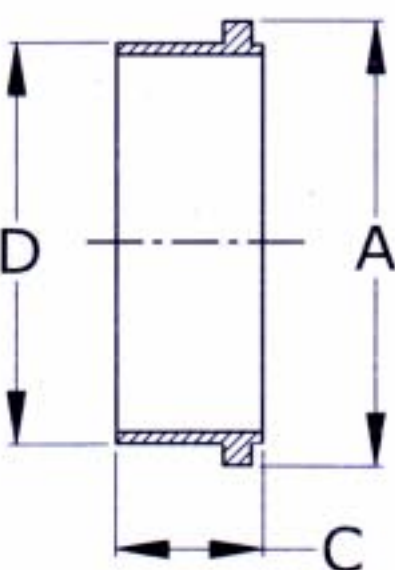
Dia (D)		
MM	A	B
25.4	33.8	17
38.1	47	20
50.8	60.5	20
63.5	74	25
76.2	87.5	30

WELDABLE MALE (IDF)



Dia(D)	Threading	
MM	C	B
25.4	25.5	21.5
38.1	38	21.5
50.8	51	21.5
63.5	63.5	21.5
76.2	76	21.5

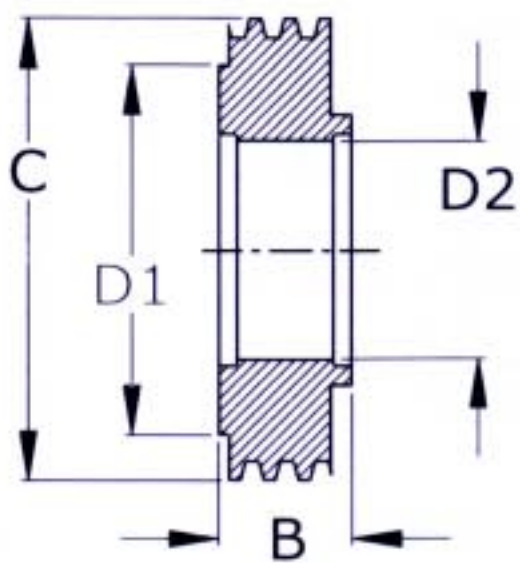
WELDABLE LINER (IDF)



Dia(D)		
MM	A	B
25.4	33.8	12
38.1	47	12
50.8	60.5	12
63.5	74	12
76.2	87.5	12

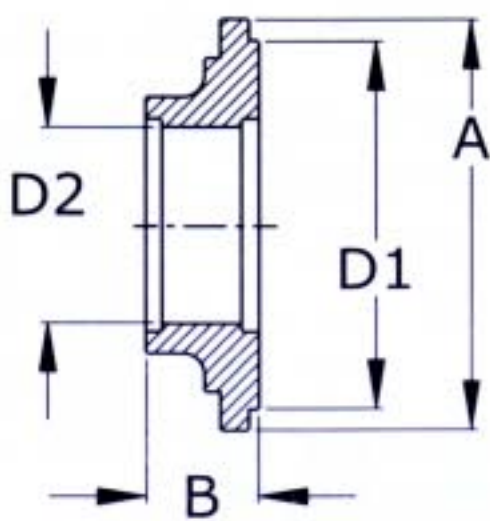
SRI PUMPS & FITTINGS INDUSTRIAL CORPORATION

REDUCING MALE EXPANDABLE (IDF)



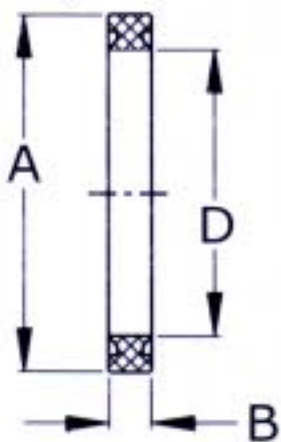
Diameter(D1)	Diameter(D2)	Threading	
MM	MM	C	B
38.1	25.4	38.1	17
50.8	25.4	50.8	17
50.8	38.1	50.8	19.5
63.5	38.1	63.5	19.5
63.5	50.8	63.5	19.5
76	50.8	76.2	19.5
76	63.5	76.2	25

REDUCING MALE EXPANDABLE (IDF)



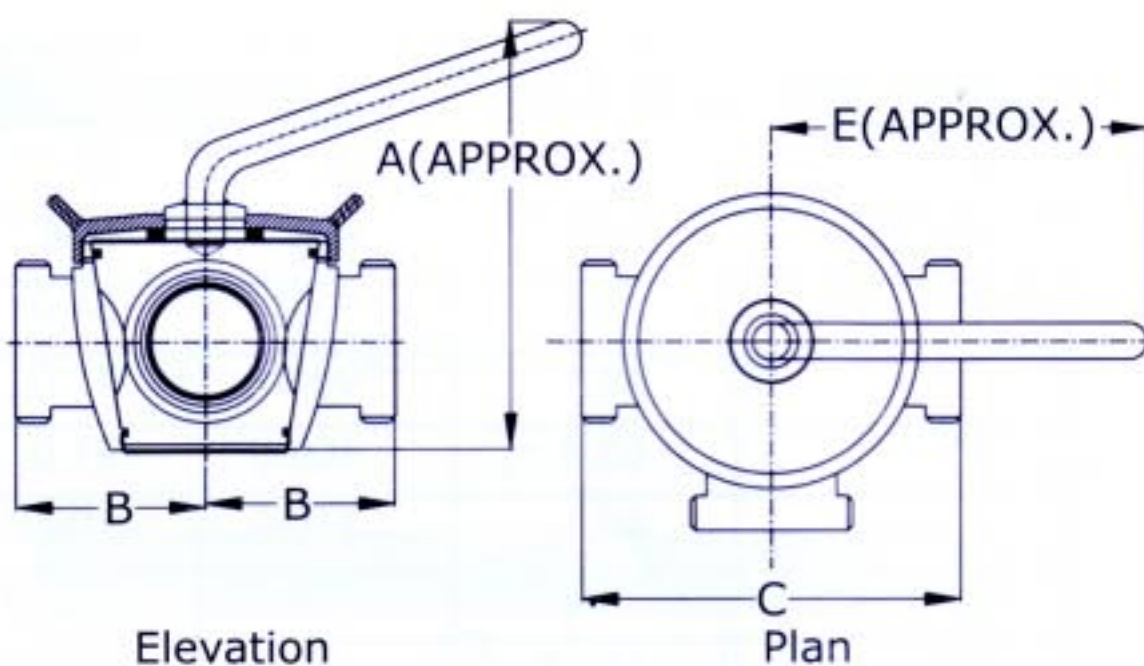
Diameter(D1)	Diameter(D2)		
MM	MM	A	B
38.1	25.4	47	17
50.8	25.4	60.5	17
50.8	38.1	60.5	20
63.5	38.1	74	20
63.5	50.8	74	20
76	50.8	87.5	20
76	63.5	87.5	25

GASKET (IDF)



MM	A	B
25.4	32.5	7
38.1	46	7
50.8	59.5	7
63.5	73	7
76.2	86.5	7

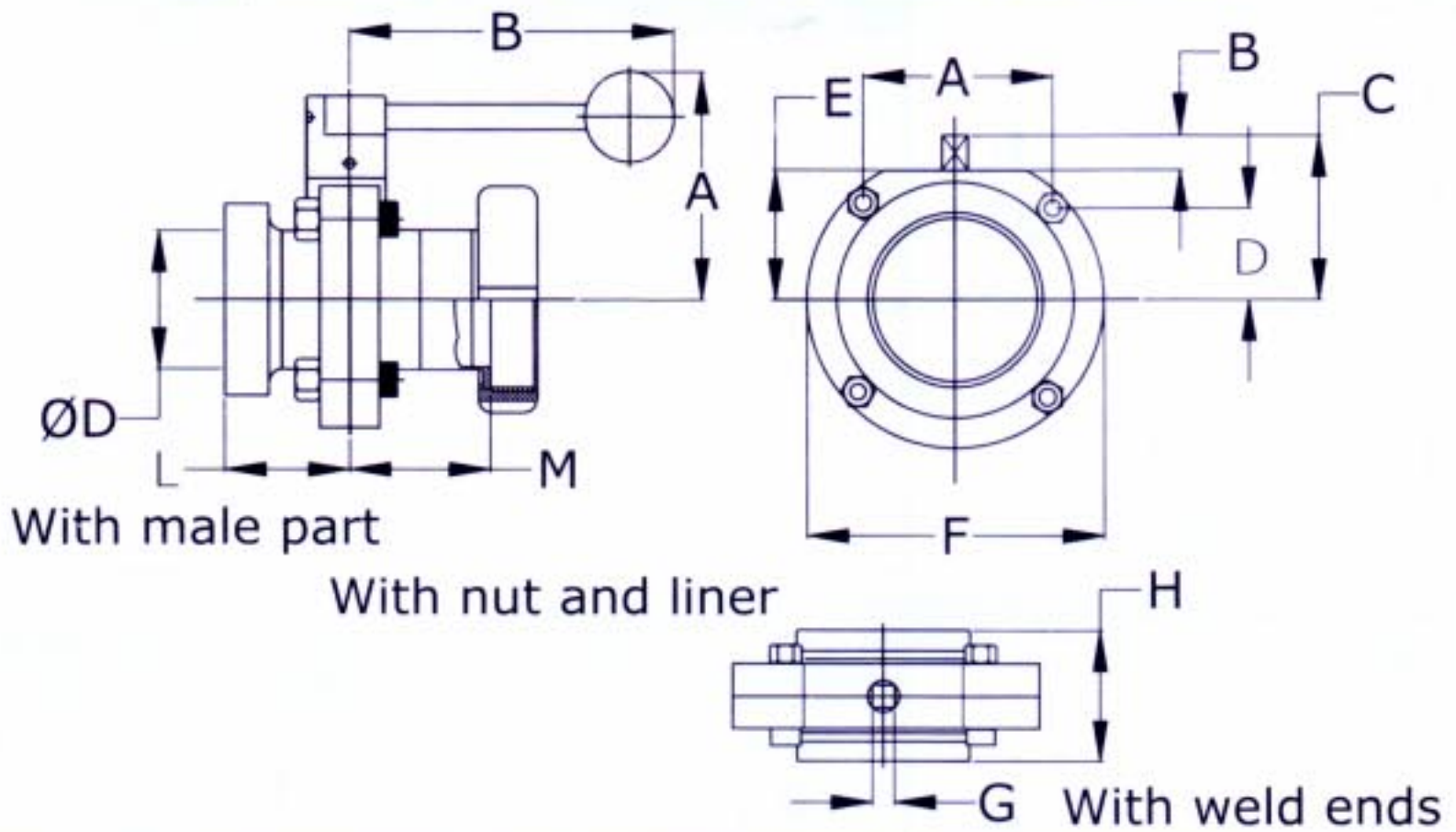
STRAIGHT THROUGH PLUG VALVE (2&3 WAY)



D	D	A	B	C	E
INCHES	MM	MM	MM	MM	MM
1"	25.4	140	55	110	90
1 1/2"	38.1	180	70	140	130
2"	50.8	185	82	164	164
2 1/2"	63.5	240	105	210	160
3"	76.2	260	110	220	190
4"	101.6	315	142	284	170

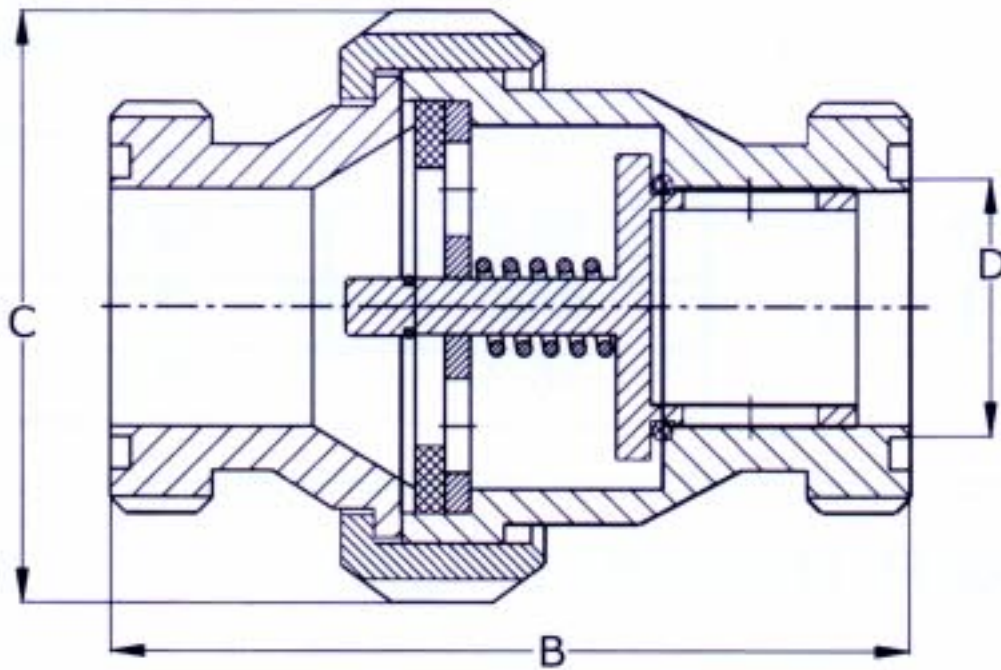
SRI PUMPS & FITTINGS INDUSTRIAL CORPORATION

BUTTERFLY VALVE (MANUALLY OPERATED)



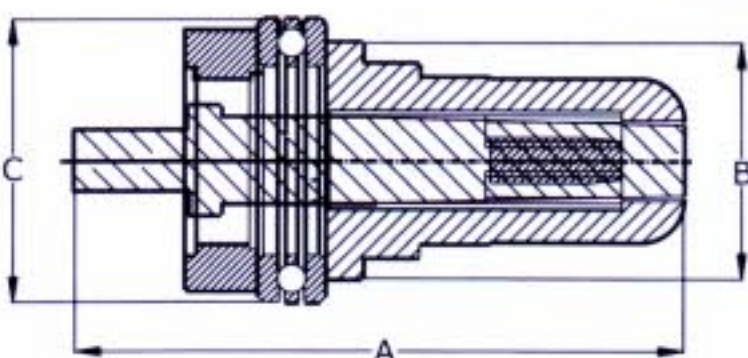
Nom. Size	N.Size	Gasket Dia											
D	D	d	Dia "D"	A	B	C	D	E	F	G	H	L	M
Inches	MM	MM	MM	MM	MM	MM	MM	MM	MM	MM	MM	MM	MM
1"	25.4	22.6	25.4	33.6	15.5	42.0	16.8	24.5	58.0	8.0	47.0	38.5	51.0
1 1/2"	38.1	35.6	38.5	47.8	16.7	49.0	23.9	32.5	78.0	8.0	47.0	43.5	52.5
2"	50.8	48.6	51.5	61.0	16.6	58.5	30.5	42.0	99.0	8.0	52.0	46.0	55.0
2 1/2"	63.5	60.3	64.0	71.8	17.5	69.5	35.9	52.0	117.0	8.0	54.0	51.0	56.0
3"	76.2	72.8	76.6	84.6	16.6	73.5	42.3	58.5	132.0	10.0	62.0	55.0	61.0
4"	101.6	97.6	102.5	104.4	16.0	93.0	52.2	77.0	163.0	10.0	80.0	75.0	72.0

NON RETURN VALVE (CHECK VALVE)



Nom. Size	Nom. Size		
D	D	B	C
INCHES	MM	MM	MM
1"	25.4	75.0	64.0
1 1/2"	38.1	90.0	77.0
2"	50.8	100.0	91.0
2 1/2"	63.5	110.0	106.0
3"	76.2	135.0	122.0
4"	101.6	150.0	163.0

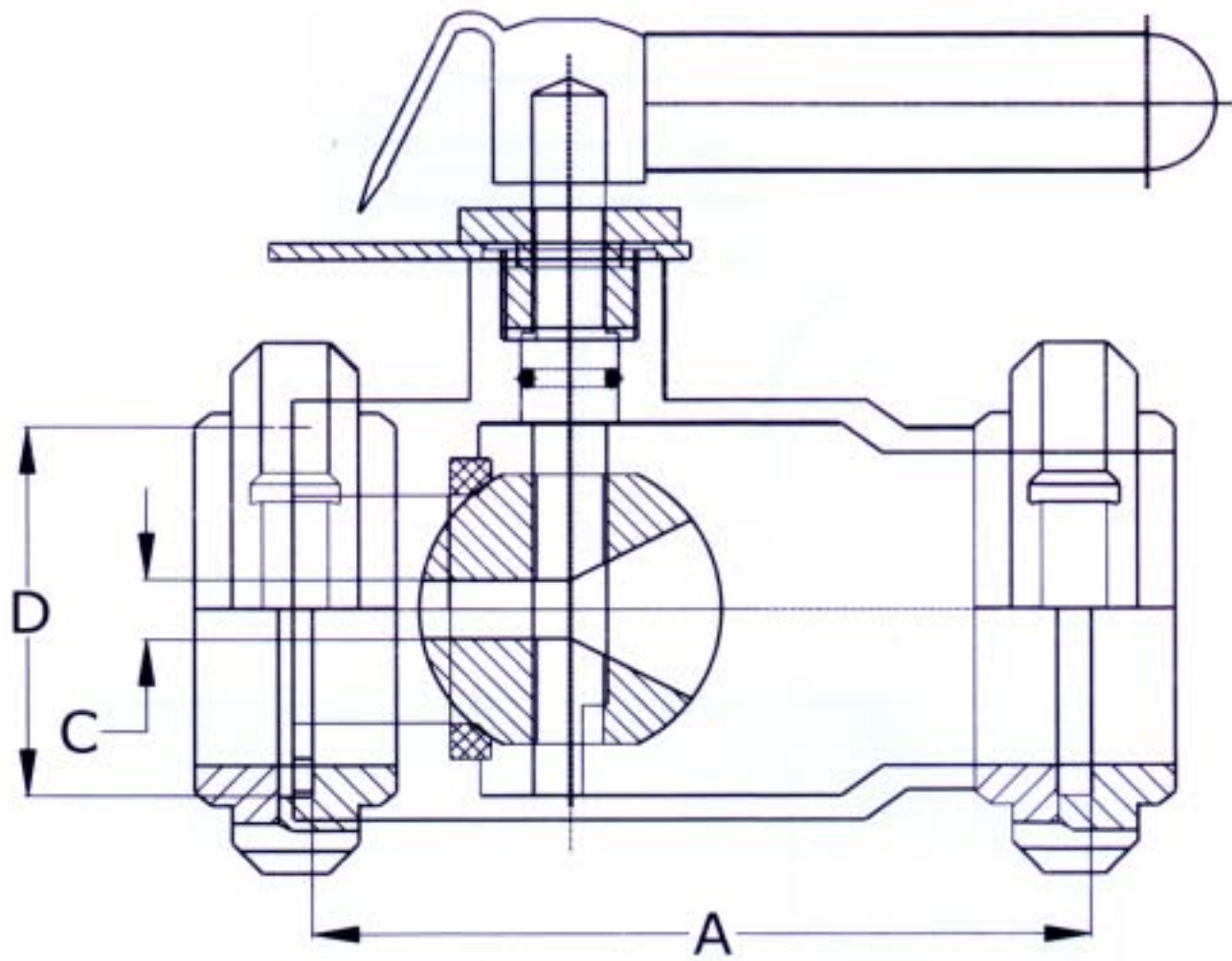
FLARING TOOL



D	D	A	B	C
INCHES	MM	MM	MM	MM
1 1/2"	25	115	35	42
2"	38	129	50	60
2 1/2"	51	129	60	70
	63	135	74	90

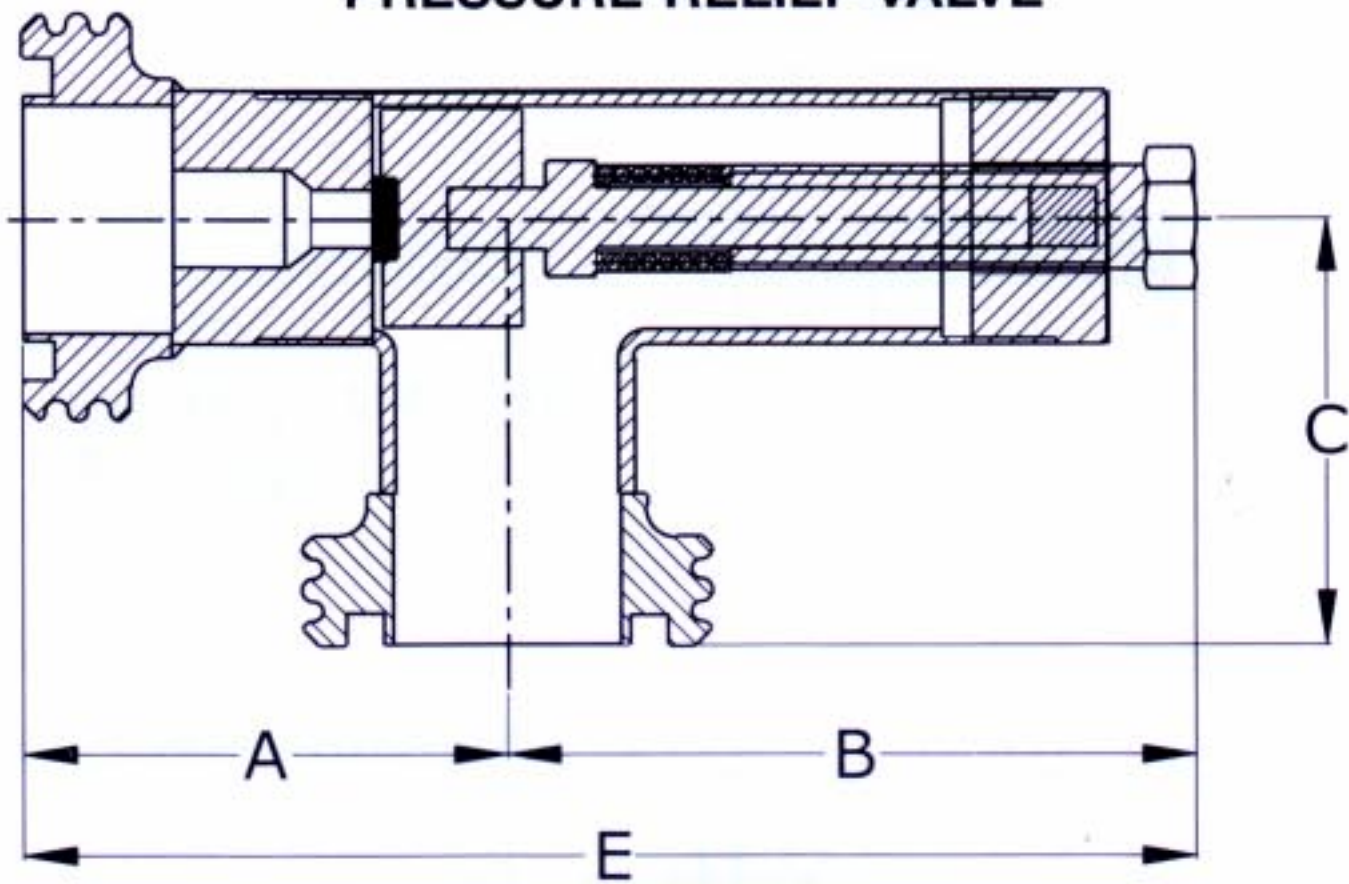
SRI PUMPS & FITTINGS INDUSTRIAL CORPORATION

FLOW REGULATING VALVE (BALL CONTROL)



Nom. Size	Nom. Size		Valve
D	D	A	Opening
INCHES	MM	MM	"C"MM
1 1/2"	38.1	90.0	6.0
2"	50.8	108.0	8.0
2 1/2"	63.5	128.0	10.0
3"	76.2	135.0	12.0

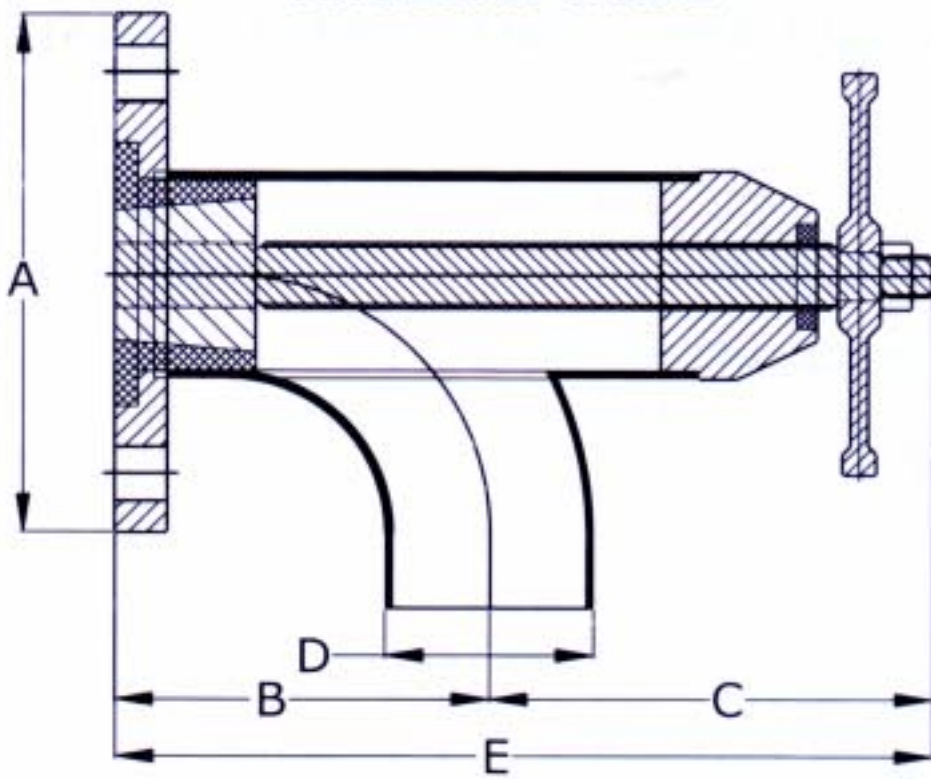
PRESSURE RELIEF VALVE



	Nom. Siz	Nom. Size				
	D	D	A	B	C	E
	INCHES	MM	MM	MM	MM	MM
PRV-A	2"	50.8	140.0	125.0	92.0	265.0
PRV-B	2"	50.8	310.0	125.0	105.0	435.0
	Flow Rate	Max. Counter				
	L/Hr.	Pressure (Kg./Sq.Cm.)				
PRV-A	0-7000	3.0				
PRV-A	7000-20000	5.5				
PRV-B	0-7000	5.5				
PRV-B	0-15000	0.5				

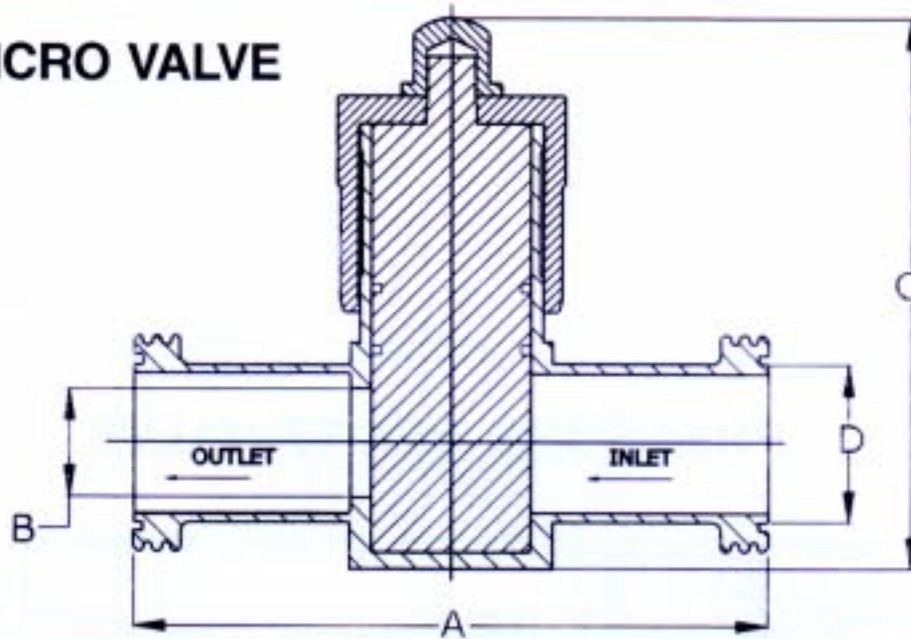
SRI PUMPS & FITTINGS INDUSTRIAL CORPORATION

ANGULAR VALVE



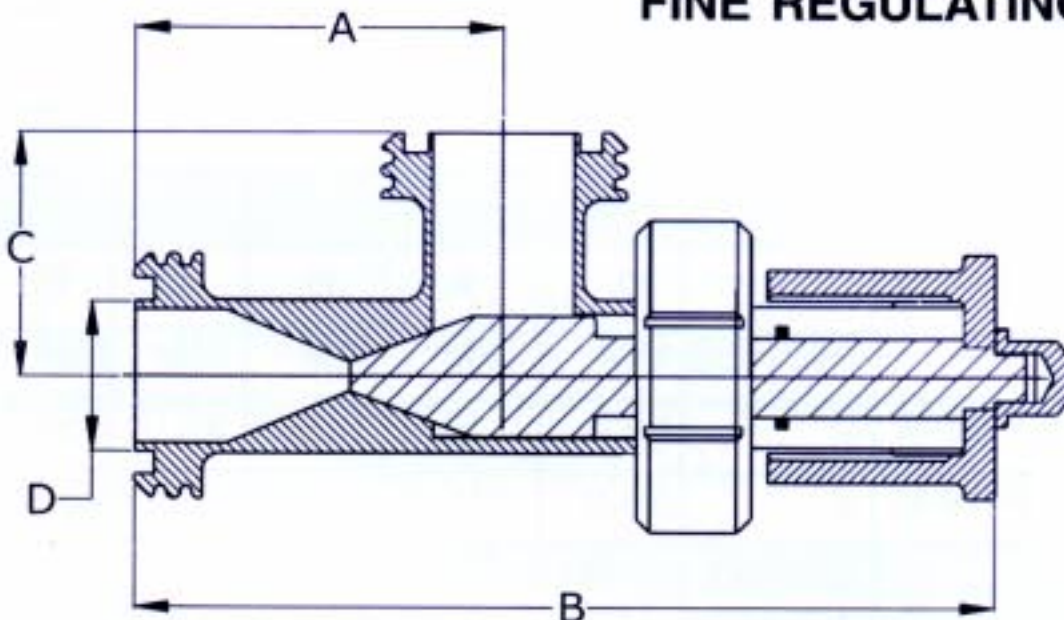
Nominal Size					
Inches	MM	A	B	C	E
1 1/2"	38.1	127	78	102	180
2"	50.8	152.5	92	118	210
2 1/2"	63.5	178	125	115	240
3"	76.2	191	110	170	280

MICRO VALVE



Nom. Size	Nom. Size			
D	D	A	C	Valve
INCHES	MM	MM	MM	Opening B
1 1/2"	38.1	175.0	140.0	25
2"	50.8	205.0	170.0	32

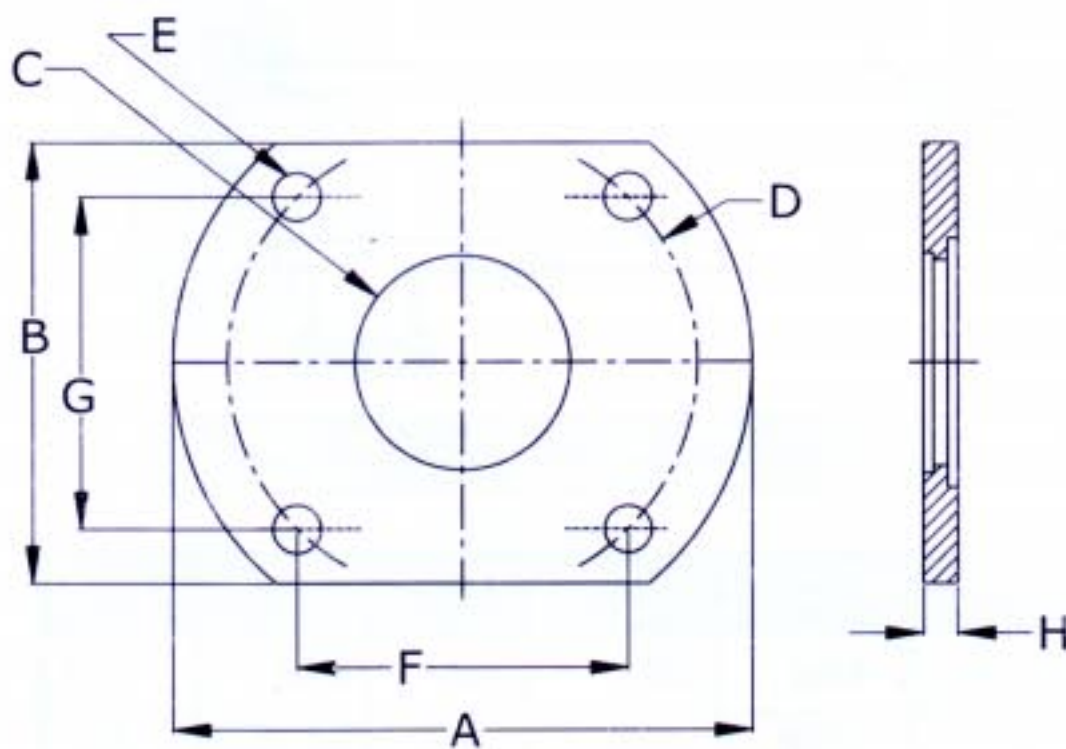
FINE REGULATING VALVE



Nom. Size	Nom. Size			
D	D	A	B	C
INCHES	MM	MM	MM	MM
1"	25.4	60.0	140.0	40

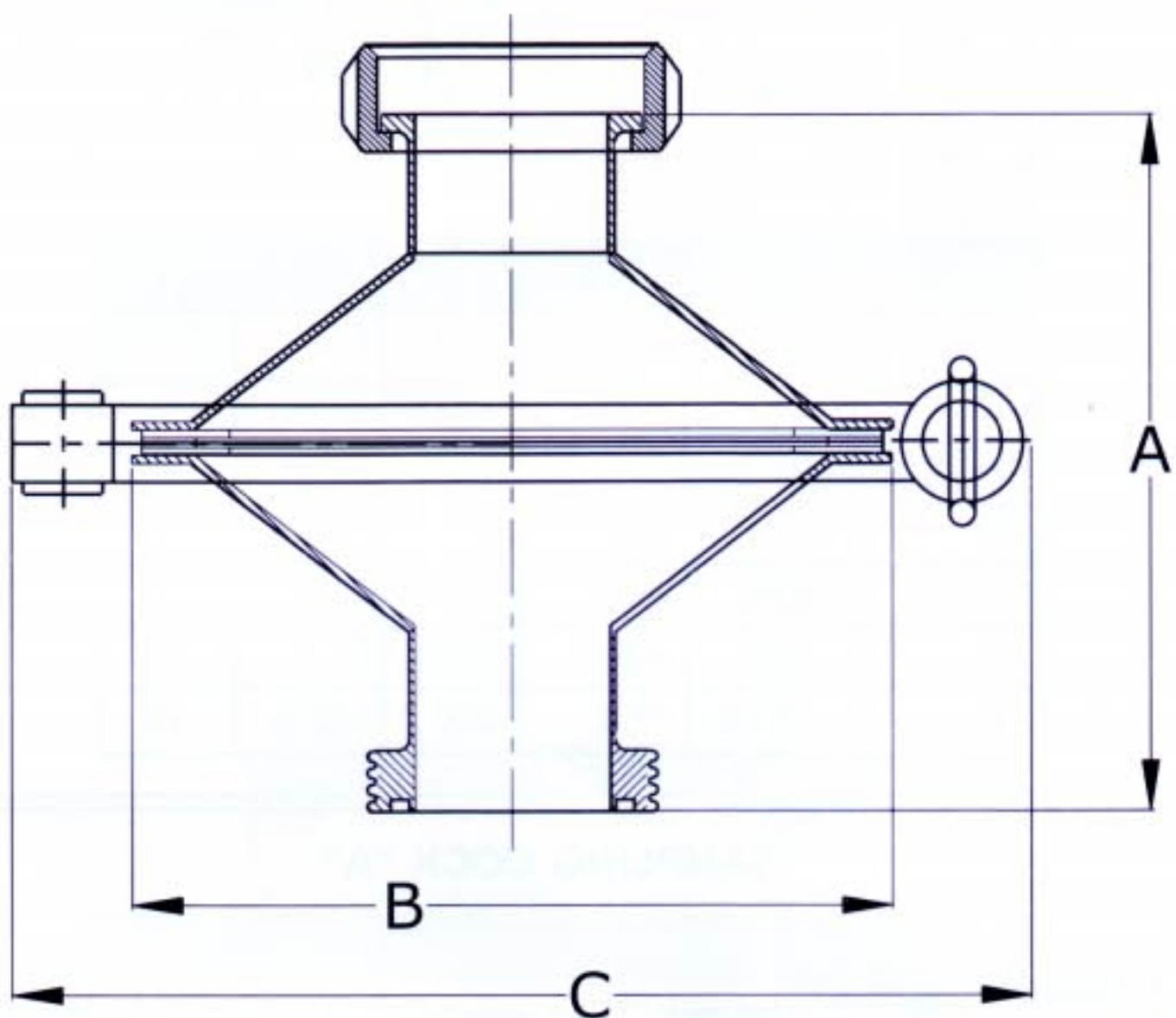
SRI PUMPS & FITTINGS INDUSTRIAL CORPORATION

FLANGE FOR PLUG / BUTTERFLY VALVE



A	B	C	D	E	F	G	H	D (N.S.)
100	70	25	70	10	54.5	44	10	25.4
120	80	35	90	10	72	54	10	38.1
140	100	48	110	14	84	70	10	50.8
160	120	60	130	14	94	90	10	63.5
170	130	73	138	14	98	100	10	76.2
210	140	100	174	14	142.5	110	10	101.6

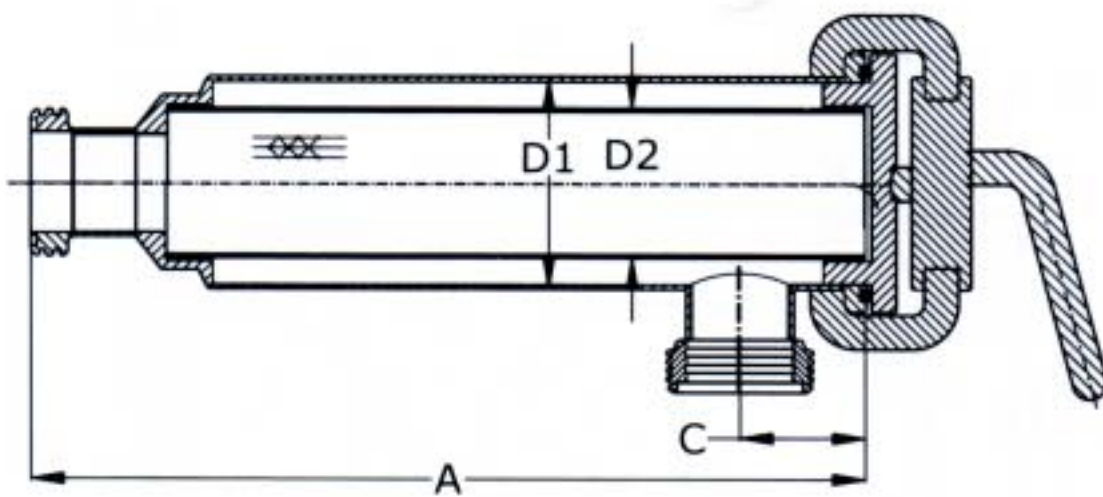
STRAINER (DISK TYPE)



D	D	A	B	C
MM	INCHES	MM	MM	
25.4	1"	185	190	255
38.1	1 1/2"	185	190	255
50.8	2"	185	190	255
63.5	3"	210	225	290

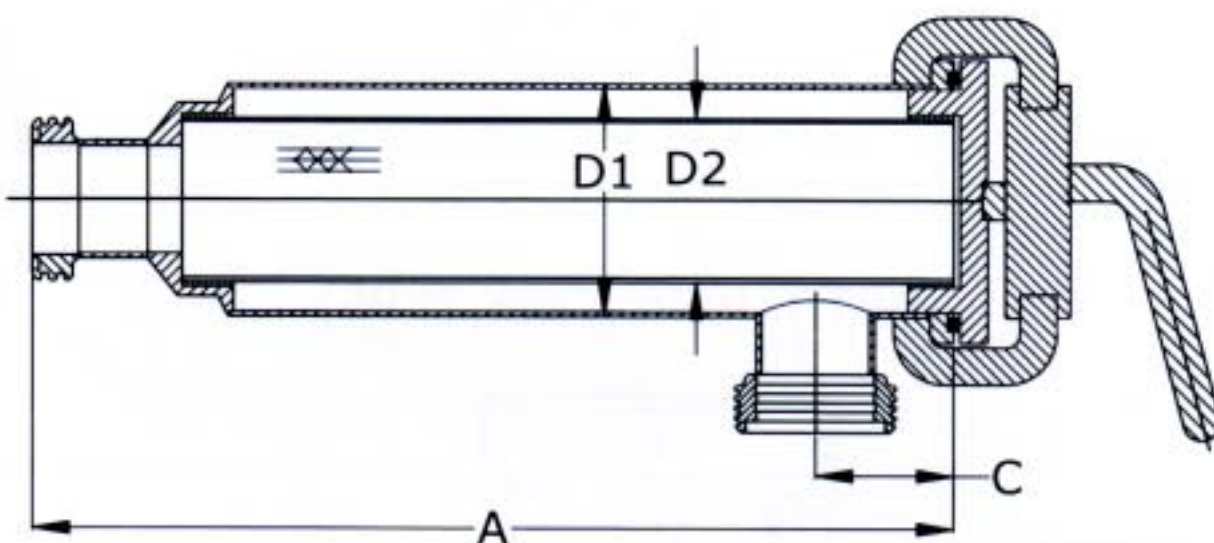
SRI PUMPS & FITTINGS INDUSTRIAL CORPORATION

STRAINER (TUBULAR TYPE "A")



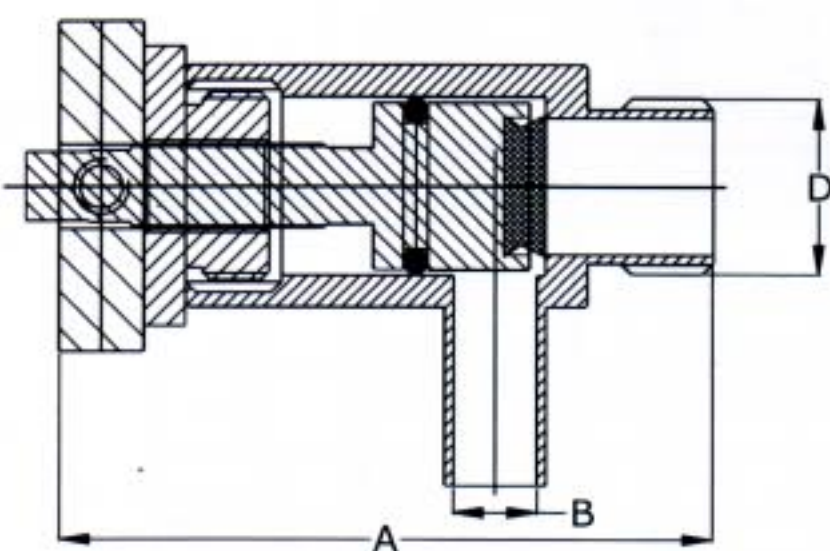
D	D	A	D1	D2	C
INCHES	MM	MM	MM	MM	MM
1"	25.4	300	76.0	51.0	50
1 1/2"	38.1	350	76.0	51.0	60
2"	50.8	400	101.6	76.0	60
2 1/2"	63.5	600	127.0	97.6	85
3"	76.2	600	165.0	97.6	85
4"	101.6	750	200.0	152.5	85

STRAINER (TUBULAR TYPE "B")



D	D	A	D1	D2	C
INCHES	MM	MM	MM	MM	MM
1"	25.4	300	76.0	51.0	50
1 1/2"	38.1	350	76.0	51.0	60
2"	50.8	400	101.6	76.0	60
2 1/2"	63.5	600	127.0	97.6	85
3"	76.2	600	165.0	97.6	85
4"	101.6	750	200.0	152.5	85

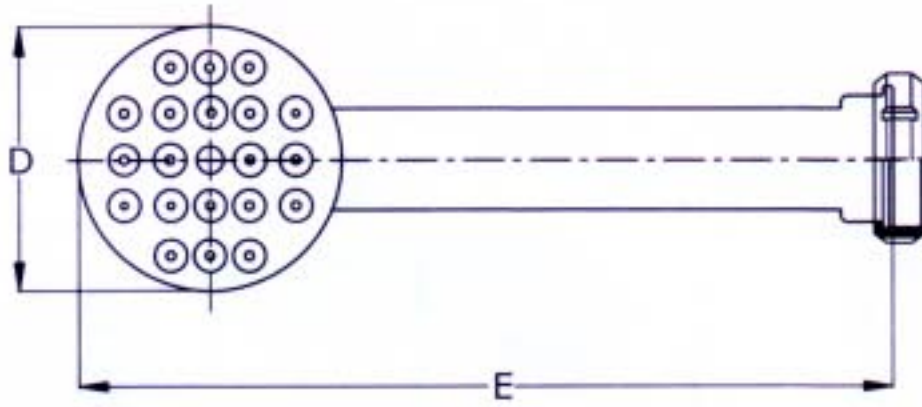
SAMPLING COCK "A"



Din D	A mm	B mm
3/4"	81.0	8.0
1/2"	81.0	8.0

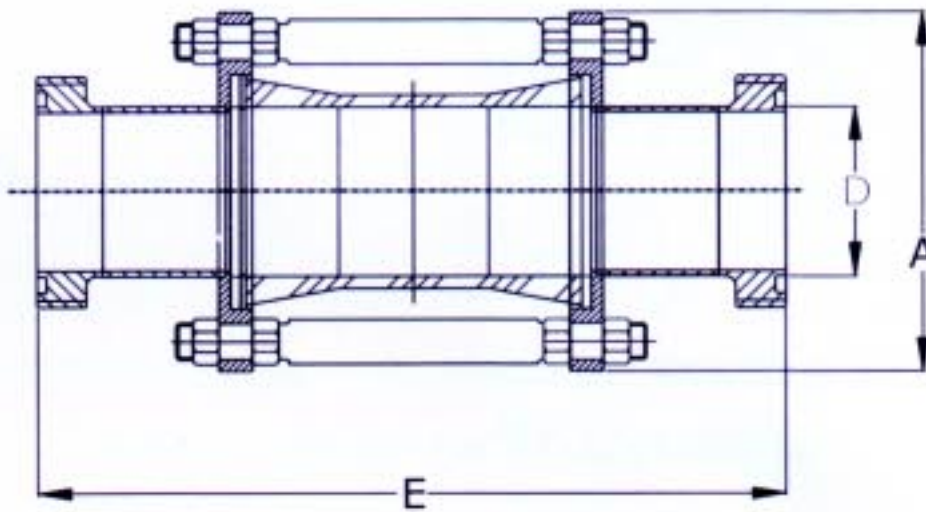
SRI PUMPS & FITTINGS INDUSTRIAL CORPORATION

SPRAY BALL WITH LINER/MALE (EXPANDABLE / WELDABLE)



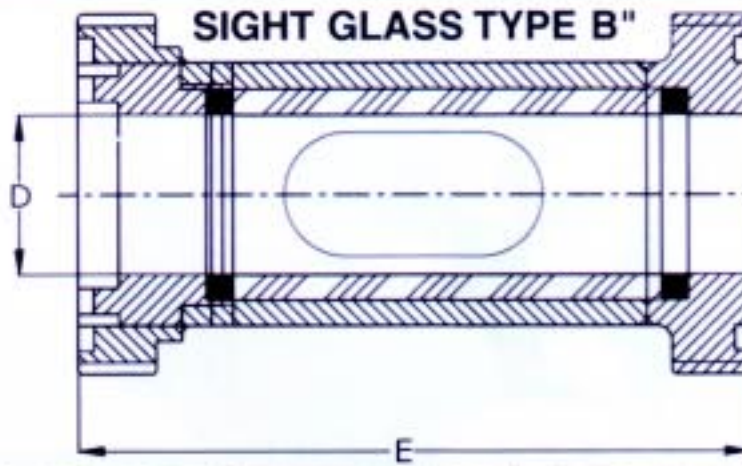
D1	D1	D	E
MM	INCHES	MM	MM
25.4	1"	75	300
38.1	1 1/2"	100	300
50.8	2"	100	300
63.5	2 1/2"	150	300
76.0	3"	150	300

SIGHT GLASS TYPE A"



D	D	A	E
MM	INCHES	MM	MM
25.4	1"	108	200
38.1	1 1/2"	127	200
50.8	2"	152	200
63.5	2 1/2"	178	200
76.0	3"	190	250
101.6	4"	217	250

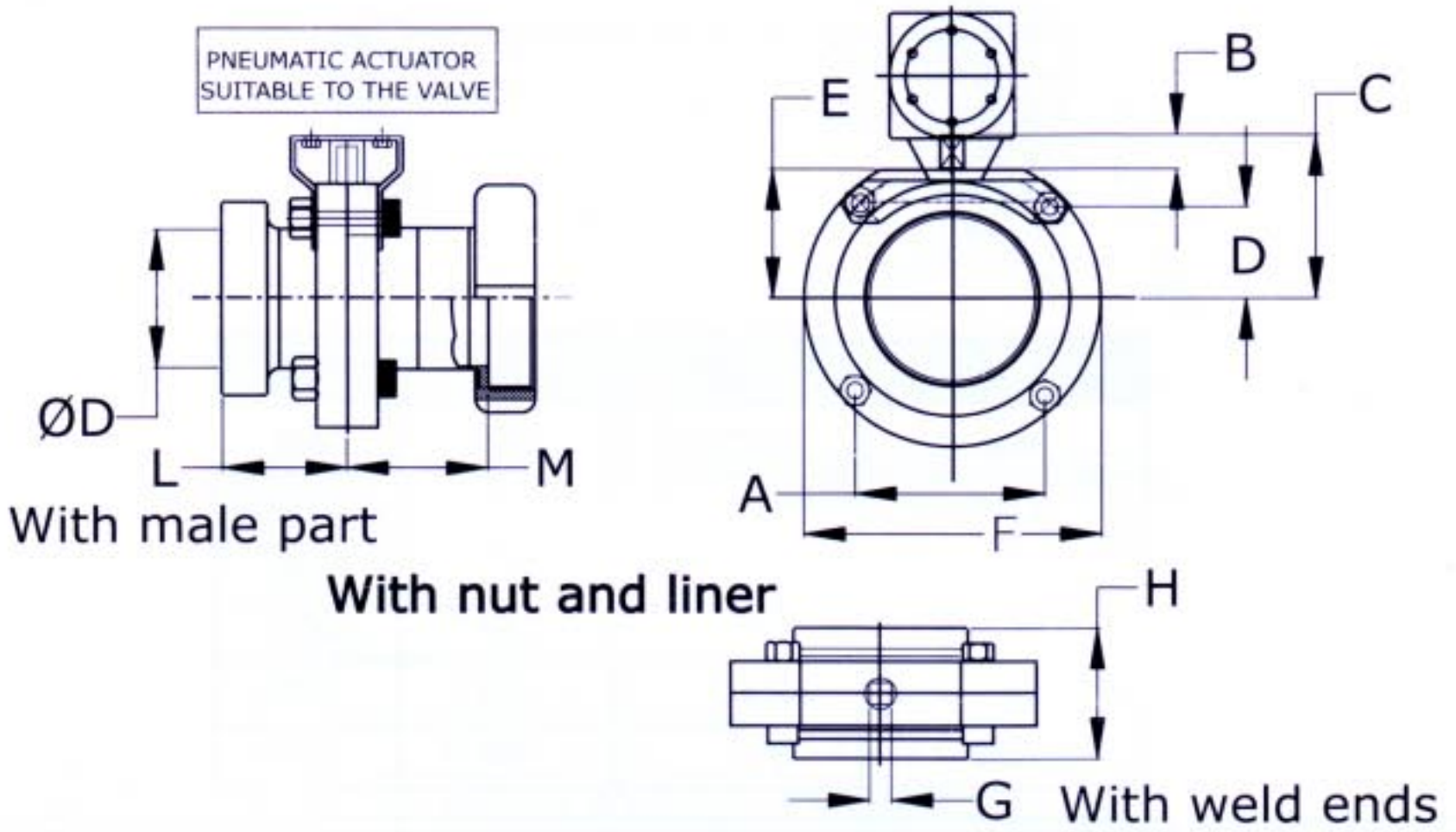
SIGHT GLASS TYPE B"



D1	D1	D	E
MM	INCHES	MM	MM
25.4	1"	12.5	130
38.1	1 1/2"	18	130
50.8	2"	25	130
63.5	2 1/2"	38	175
76.0	3"	50	175
101.6	4"	63	175

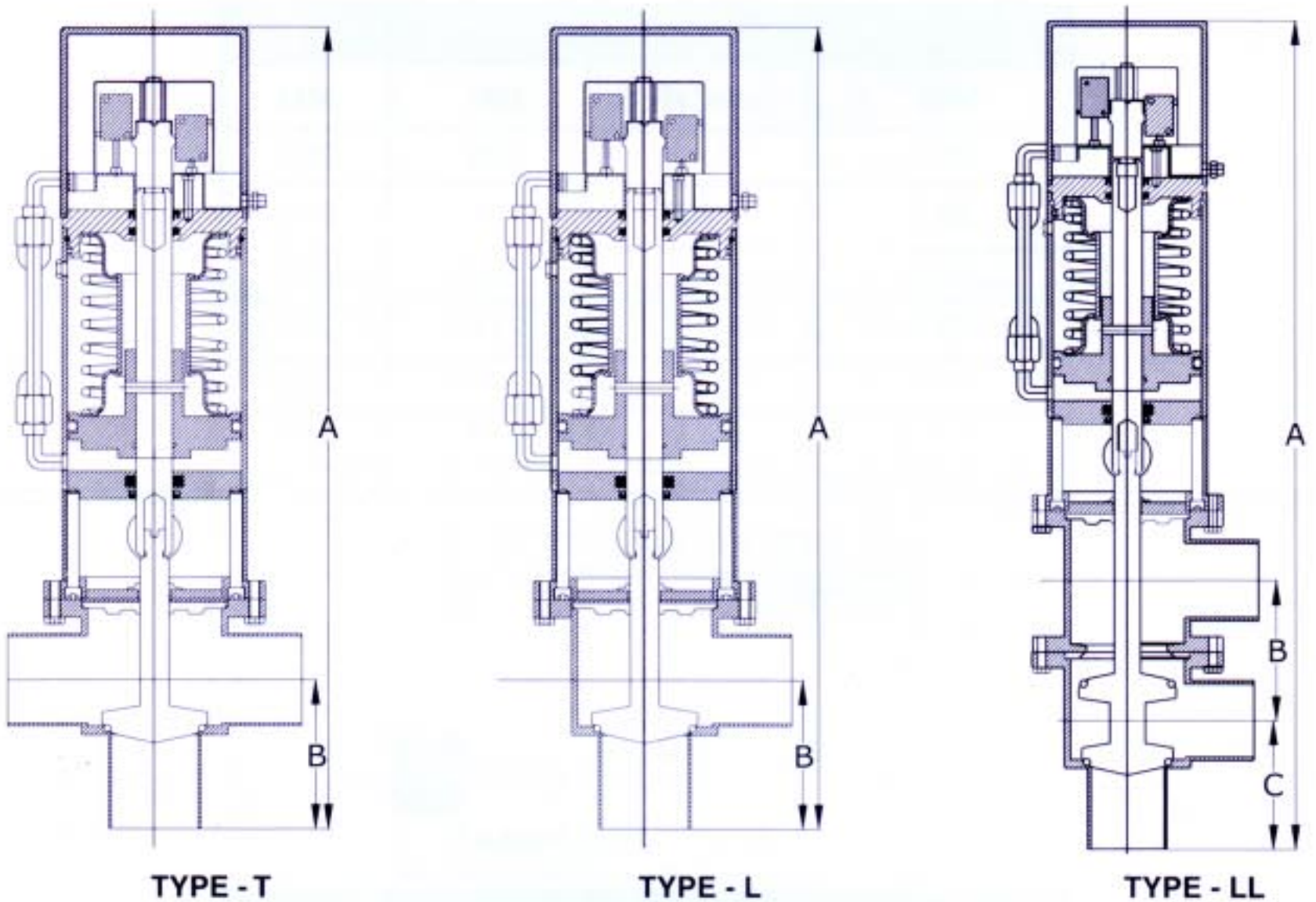
SRI PUMPS & FITTINGS INDUSTRIAL CORPORATION

BUTTERFLY VALVE WITH ROTARY ACTUATOR



Nom. Size	N.Size	Gasket Dia											
D	D	d	Dia "D"	A	B	C	D	E	F	G	H	L	M
Inches	MM	MM	MM	MM	MM	MM	MM	MM	MM	MM	MM	MM	MM
1"	25.4	22.6	25.4	33.6	15.5	42.0	16.8	24.5	58.0	8.0	47.0	38.5	51.0
1 1/2"	38.1	35.6	38.5	47.8	16.7	49.0	23.9	32.5	78.0	8.0	47.0	43.5	52.5
2"	50.8	48.6	51.5	61.0	16.6	58.5	30.5	42.0	99.0	8.0	52.0	46.0	55.0
2 1/2"	63.5	60.3	64.0	71.8	17.5	69.5	35.9	52.0	117.0	8.0	54.0	51.0	56.0
3"	76.2	72.8	76.6	84.6	16.6	73.5	42.3	58.5	132.0	10.0	62.0	55.0	61.0
4"	101.6	97.6	102.5	104.4	16.0	93.0	52.2	77.0	163.0	10.0	80.0	75.0	72.0

PNEUMATICALLY ACTUATED VALVES



Nom. Size	Nom. Size	(TABLE FOR LL TYPE)		
D	D	A	B	C
INCHES	MM	MM	MM	MM
1 1/2"	38.1	518.0	90.0	70.0
2"	50.8	530.0	90.0	82.0
2 1/2"	63.5	578.0	106.0	106.0
3"	76.2	710.0	126.0	126.0

SRI PUMPS Mfg Co.,

Centrifugal Pumps



Pneumatically



Controlled Valves

“
*Complete Solution
for Automisation
of your
Processing
Systems*”



11-49, Pidimgoyya, Morampudi Junction,
Rajahmundry - 533103. Andhra Pradesh. INDIA .
Tel : 0883-3956668, 2426845 Fax : 0883-2430819.
email : sripumps@yahoo.co.in, sripumps@rediffmail.com

**Manufacturers of Valves, Fittings & Pumps
for Process Industries**

श्री

Office

**Sri Pumps & Fittings Industrial Corporation.
D.No.11-49, Pidimgoyya Panchayati,
RAJAHMUNDRY-533 103
(Andhra Pradesh),INDIA.**

**Ph : 91 883- 5577824, 2426845, 3956668
FAX : 91 883-2430819
E-Mail: sripumps@yahoo.co.in**

Factory

**Sri Pumps & Fittings Industrial Corporation.
D.No.89-18-45,Morampudi Junction,
RAJAHMUNDRY-533 103
(Andhra Pradesh),INDIA.**

**Ph : 91 883- 3956667, 9397900551,9397917637
FAX : 91 883-2430819
E-Mail: sripumps@yahoo.co.in**

श्री प्रिम्स अँड फिटिंग्स इण्डरियल कॉर्पोरेशन